

How to get LCR-800 series ONLINE by using the Hyper-terminal

LCR-800 series configuration:

	<p>Make sure the RS-232 interface is ON</p> <p>(Operation by Key-pad)</p> <p>MENU → SORT → RS232 → ON →EXIT</p>
	<p>Make sure the LCR-800 series is under MANU trigger.</p> <p>(Operation by Key-pad)</p> <p>START (long press by 1~2s)</p>

Hyper-terminal Configuration:

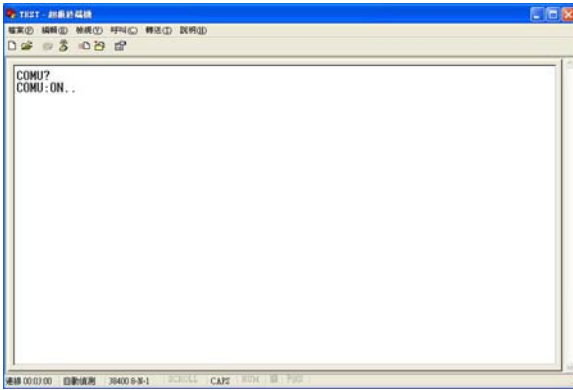
	<p>COM port configuration</p> <p>Baud-rate : 38400</p> <p>Data bit : 8</p> <p>Parity : NONE</p> <p>Stop bit : 1</p> <p>Flow control : NONE</p>
--	--

Follow the numbers in the picture to complete the rest setting of Hyper-terminal

--	--

How to get LCR-800 series ONLINE by using the Hyper-terminal

Get the LCR-800 series ONLINE



Send Command:

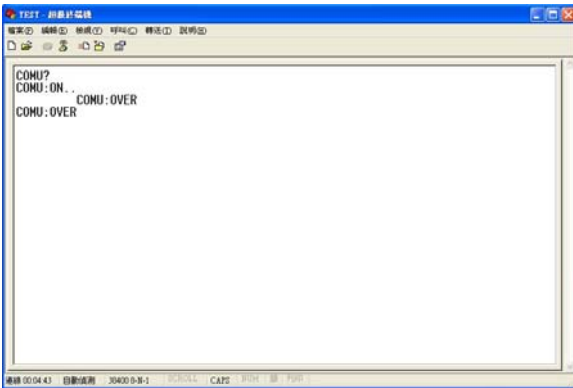
COMU? <^J^M>

Get Respond:

COMU:ON..

Notice:

<^J^M> is message terminator and means pressing the Ctrl J & Ctrl M by keyboard.



Send Command:

COMU:OVER <^J^M>

Get Respond:

COMU:OVER

Notice:

<^J^M> is message terminator and means pressing the Ctrl J & Ctrl M by keyboard.

After sending the above commands successfully, LCR-800's display should become

RS232 ONLINE

Notice: The sending commands should be all **"Capital"**.