

GRA-431



## Assembly Manual

GW Part No. 82RA-43100M01

This assembly manual contains proprietary information, which is protected by copyrights. All rights are reserved. No part of this manual may be photocopied, reproduced or translated to another language without prior written consent of Good Will company.

The information in this manual was correct at the time of printing. However, Good Will continues to improve products and reserves the rights to change specification, equipment, and maintenance procedures at any time without notice.

Good Will Instrument Co., Ltd.  
No. 7-1, Jhongsing Rd., Tucheng Dist., New Taipei City 236, Taiwan.



ISO-9001 CERTIFIED MANUFACTURER

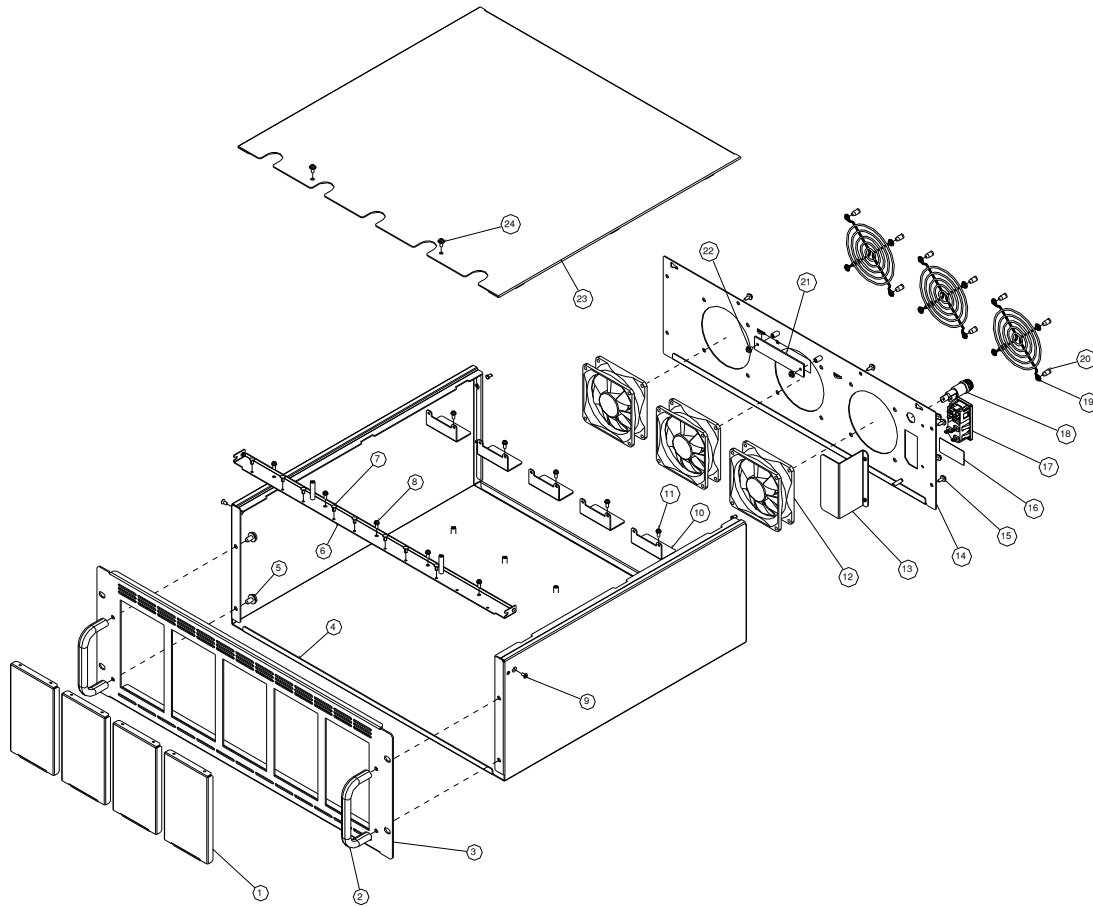
**GW INSTEK**



# GRA-431 Part Details

## EIA part details

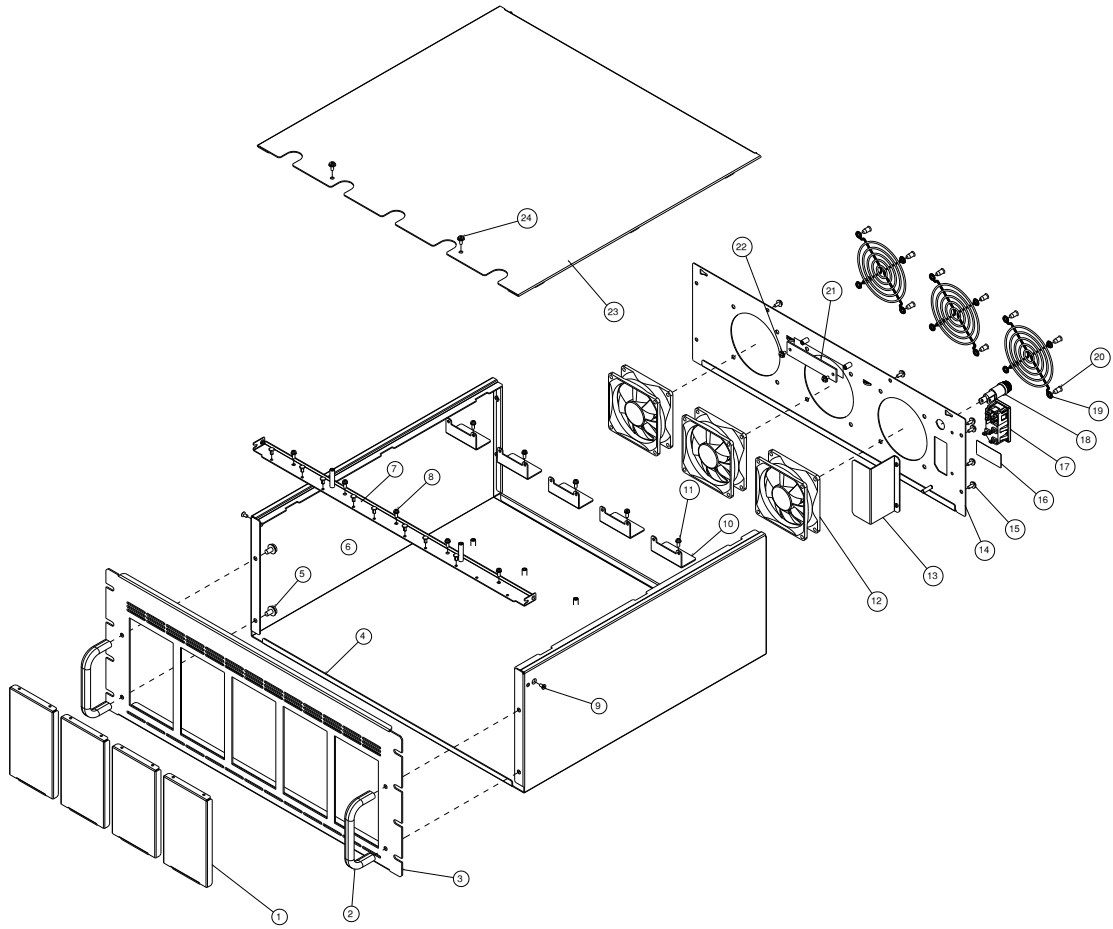
Item	Part No.	Description	Q'ty
1	62RA-431SC101	Cover Plate	4
2	62SU-03AHD101	62SU-03AHD101	2
3	62RA-431FP101	EIA FP	1
4	62RA-431LO101	LO	1
5	594B-W5010NS1	BMS-W-5X10	4
6	62RA-431HP201	FP HP	1
7	5320-00603511	SR-3L	8
8	592B-W3008NS1	PMS-W 3X8	5
9	593B-03006NS1	FMS 3X6	8
10	62RA-431HP101	RACK HP	5
11	592B-W3008NS1	PMS-W 3X8	5
12	3812-16100101	Fan (Vin_AC: 100V)	3
	3812-26100101	Fan (Vin_AC: 200V)	3
13	62RA-431HP301	RP HP	1
14	62RA-431RP101	RP	1
15	594B-W3008NS1	BMS-W-3X8	8
16	5802-04050901	Voltage indication -100	1
	5802-04051001	Voltage indication -200	1
17	3610-01002601	Rocker Switch	1
18	37H2-52000201	Fuse Holder	1
19	62BT-120SP101	Fan Grid	3
20	593B-05010N31	FAN SCREW 5*10	12
21	13RA-4310010	FAN PCB	1
22	594B-W3008NS1	BMS-W-3X8	2
23	62RA-431UP101	UP	1
24	594B-W3008NS1	BMS-W-3X8	2



**JIS part details**

Item	Part No.	Description	Q'ty
1	62RA-431SC101	Cover Plate	4
2	62SU-03AHD101	62SU-03AHD101	2
3	62RA-431FP201	JIS FP	1
4	62RA-431LO101	LO	1
5	594B-W5010NS1	BMS-W-5X10	4
6	62RA-431HP201	FP HP	1
7	5320-00603511	SR-3L	8
8	592B-W3008NS1	PMS-W 3X8	5
9	593B-03006NS1	FMS 3X6	8
10	62RA-431HP101	RACK HP	5
11	592B-W3008NS1	PMS-W 3X8	5
12	3812-16100101	Fan(Vin_AC: 100V)	3
	3812-26100101	Fan(Vin_AC: 200V)	3
13	62RA-431HP301	RP HP	1
14	62RA-431RP101	RP	1
15	594B-W3008NS1	BMS-W-3X8	8
16	5802-04050901	Voltage indication -100	1

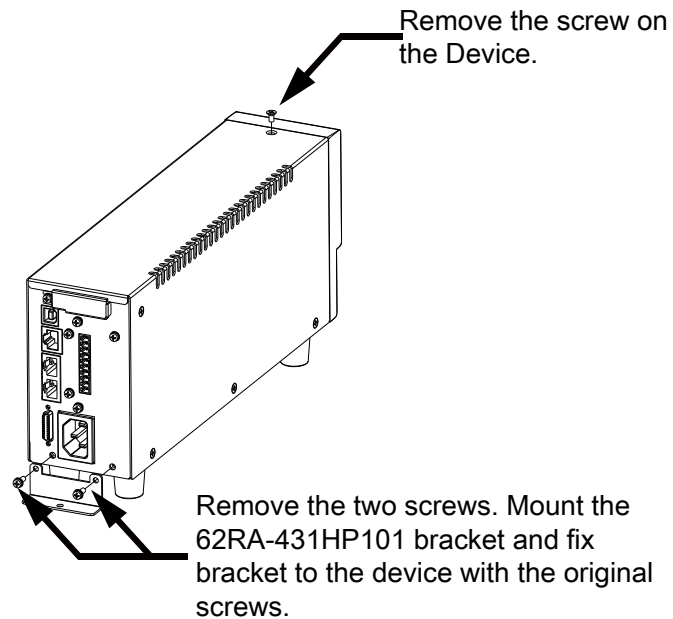
	5802-04051001	Voltage indication -200	1
17	3610-01002601	Rocker Switch	1
18	37H2-52000201	Fuse Holder	1
19	62BT-120SP101	Fan Grid	3
20	593B-05010N31	Fan Screw 5*10	12
21	13RA-4310010	Fan PCB	1
22	594B-W3008NS1	BMS-W-3X8	2
23	62RA-431UP101	UP	1
24	594B-W3008NS1	BMS-W-3X8	2



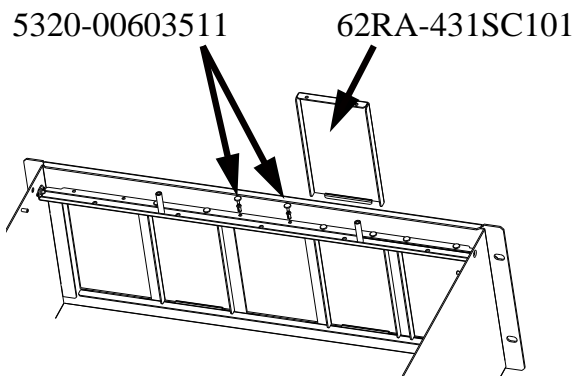
# Preparation before mounting to the rack

---

1. Remove the fan module and cover.



2. Remove the black plastic rivets by hand, so you can remove the cover with bare hand.



Note

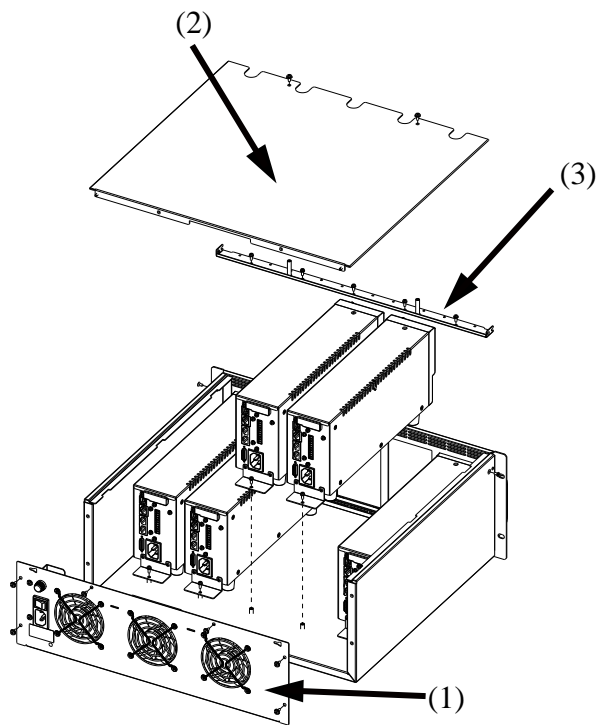
Decided the quantity of removing the 62RA-431SC101 according to the actual needs.

# Assembly (Procedure for both EIA and JIS are same)

---

## Steps

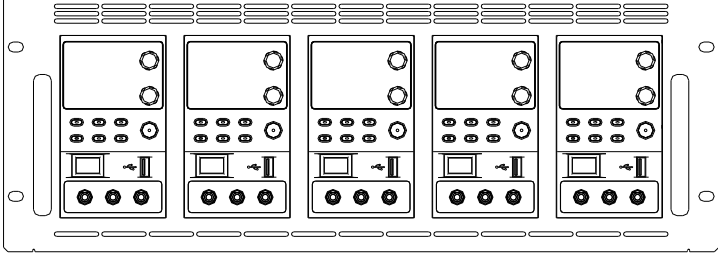
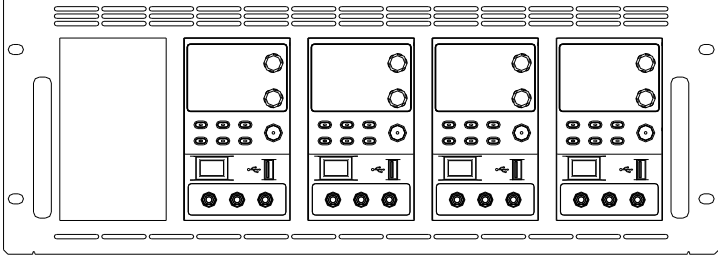
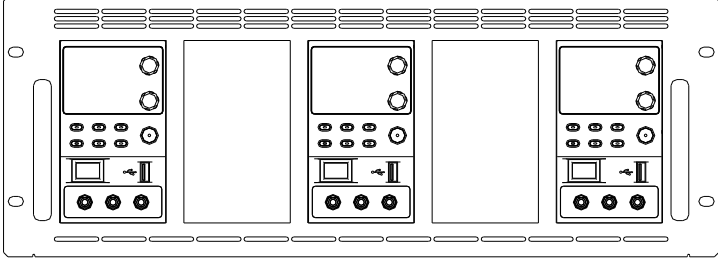
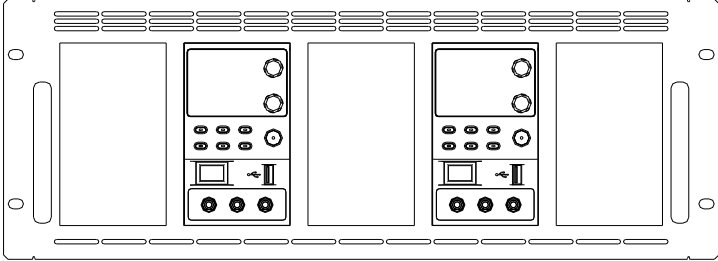
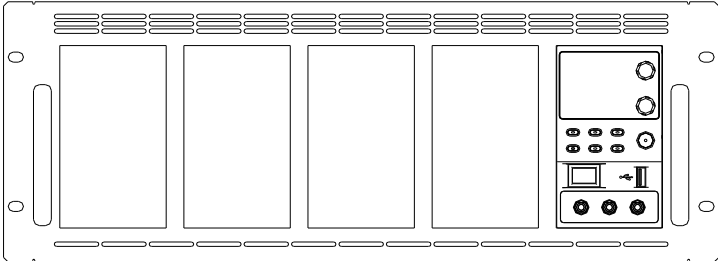
1. Remove the fan module.
2. Remove the cover 62RA-431UP101.
3. Remove 62RA-431HP201.



After steps 1, 2 and 3 are completed, the previously prepared device can be mounted on the rack.

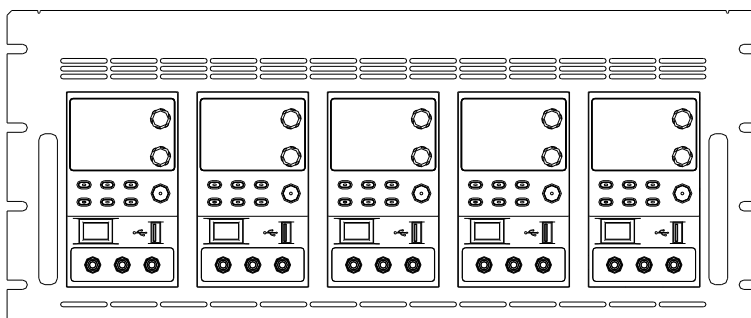
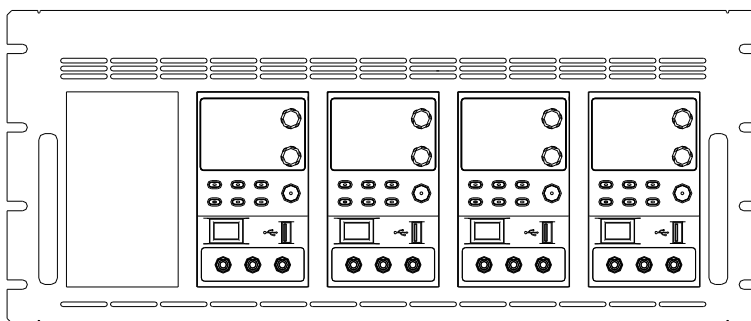
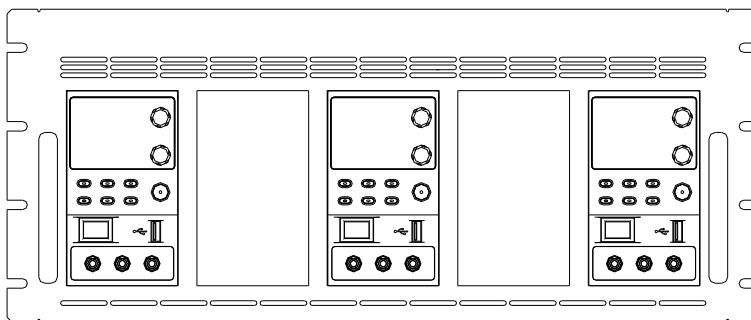
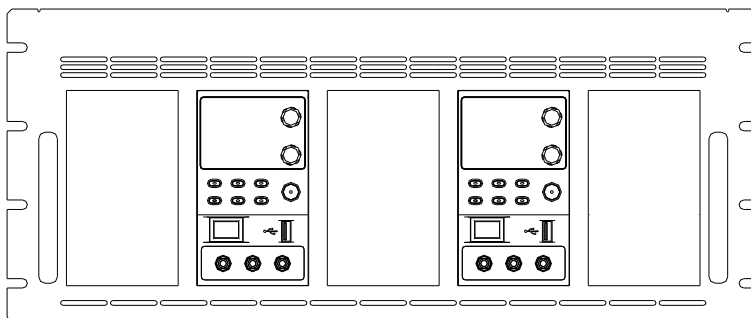
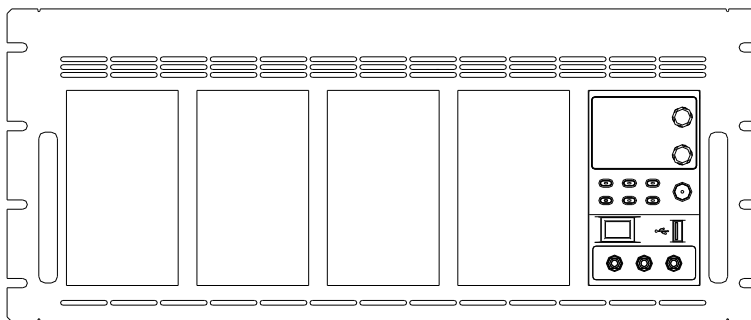
# GRA-431 Front View

GRA-431-E





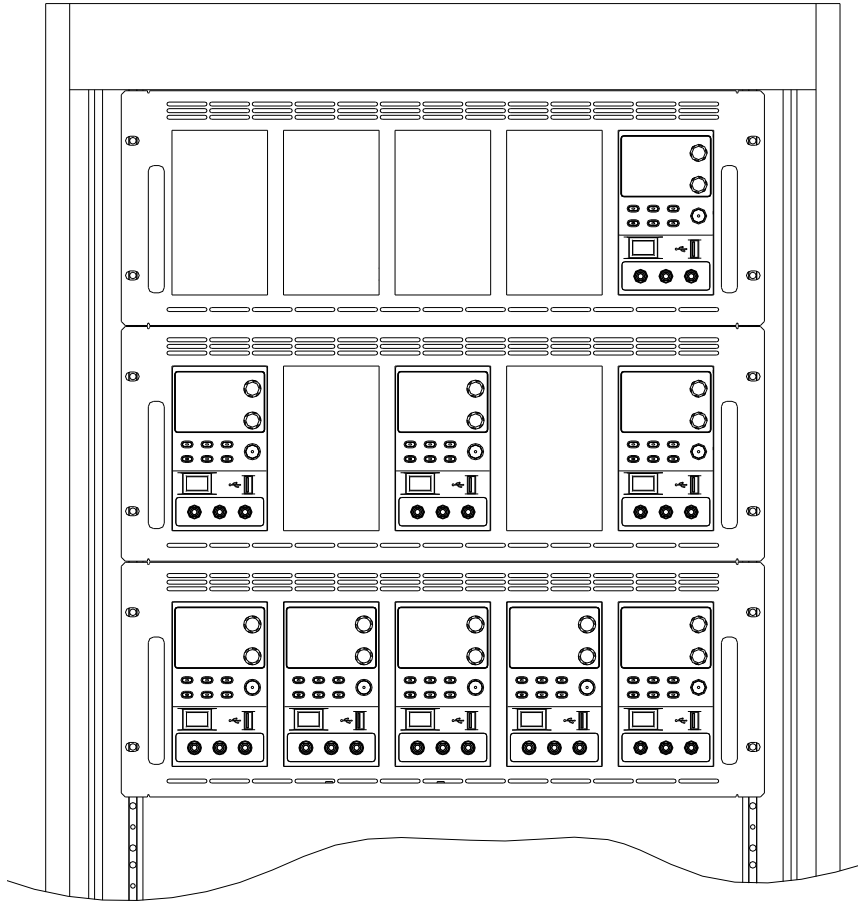
GRA-431-J



---

## Front view of 19" standard rack with mounted modules

---



---

### Note

- Please note that there are two kinds of rack, EIA and JIS respectively. Incorrect dimension may result in inability to assemble.
- L-shaped angle iron can be added to the right and left sides of the rack at mounting to increase its strength.
- The thickness of L-shaped angle iron must not exceed 2.0mm.
- If more than two units are installed on the GRA-431, fans must be installed to prevent OTP.