

# Compact Digital Storage Oscilloscope and Digital Multimeter

GDS-200 and GDS-300 Series

---

**SAFE MODE FIRMWARE UPDATE MANUAL**



ISO-9001 CERTIFIED MANUFACTURER

**GW INSTEK**

This manual contains proprietary information, which is protected by copyrights. All rights are reserved. No part of this manual may be photocopied, reproduced or translated to another language without prior written consent of Good Will company.

The information in this manual was correct at the time of printing. However, Good Will continues to improve products and reserves the right to change specifications, equipment, and maintenance procedures at any time without notice.

**Good Will Instrument Co., Ltd.**

**No. 7-1, Jhongsing Rd., Tucheng Dist., New Taipei City 236, Taiwan.**

# **T**ABLE OF CONTENTS

UPGRADE PROCEDURE .....4

    Safe mode upgrade procedure ..... 4

# UPGRADE PROCEDURE

In case the normal firmware upgrade procedure described in the GDS-200/300 User Manual fails, please use this Safe Mode Firmware Update procedure.

## Safe mode upgrade procedure

---

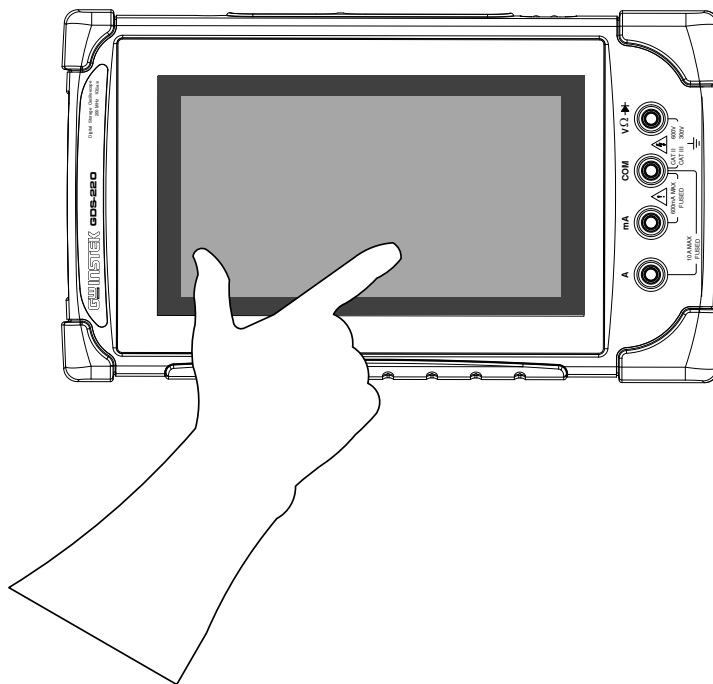
### Required

A valid firmware file for GDS-200/300 (*file.upg*)

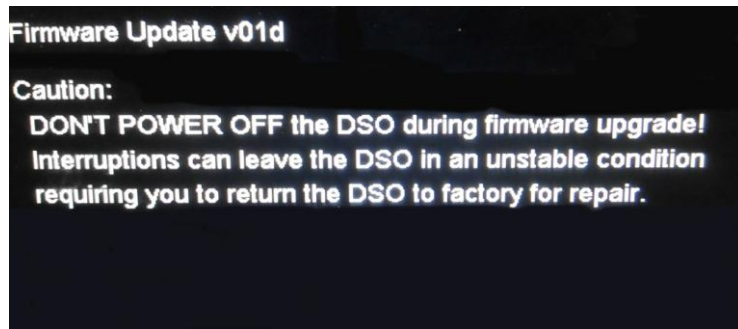
Type A / mini-B USB cable

### Steps

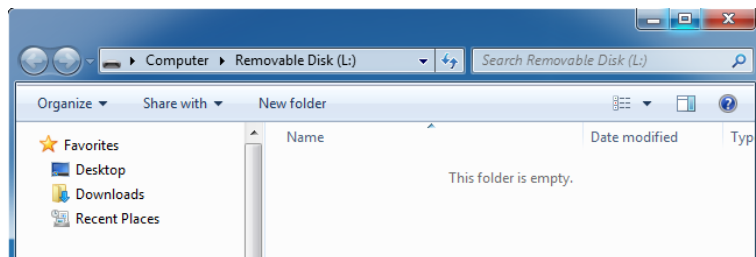
1. Turn on the GDS-200/300 and immediately tap on the middle and left side of the screen while the device is booting-up. The GDS-200/300 must be in horizontal position.



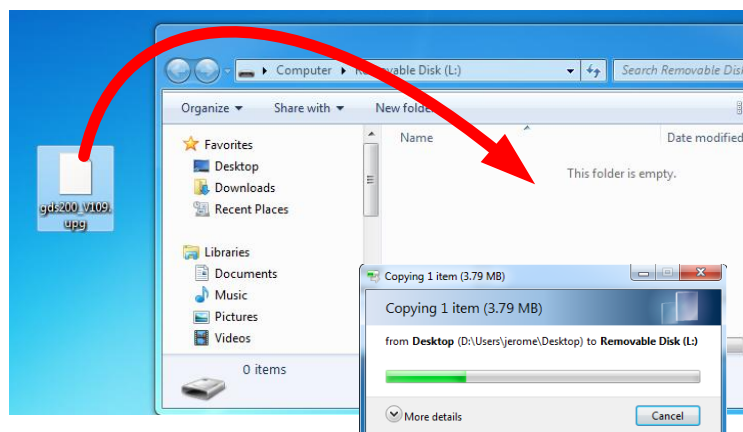
- The following message should appear on the screen. If it does not appear and the GDS-200/300 continues to boot until normal operation starts, turn-off the device and start again.



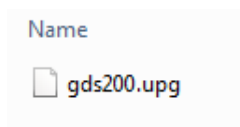
- Connect the GDS-200/300 to your PC using the type A / mini-B USB cable.
- The GDS-200/300 should appear on your PC as a remote removable disk.



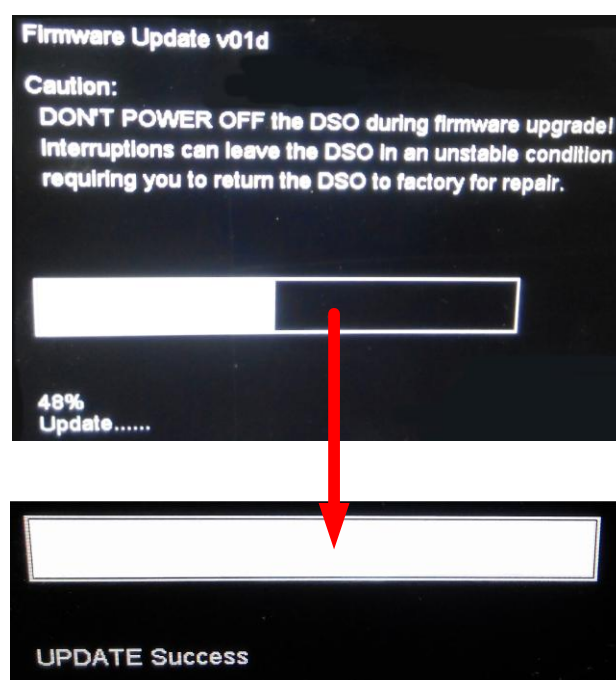
- Copy a valid firmware file onto the removable disk.



- Once the file is copied to the GDS-200/300 disk, rename it as follow if needed: *gds200.upg*.



- Disconnect the USB cable from the GDS-200/300. The firmware update procedure will start automatically.



- After the update procedure has completed, reboot the GDS-200/300 to finalize the upgrade.