



# GW Instek DAQ-9600

## Digital Dual Measurement Multimeter

### LAN Connection Guide

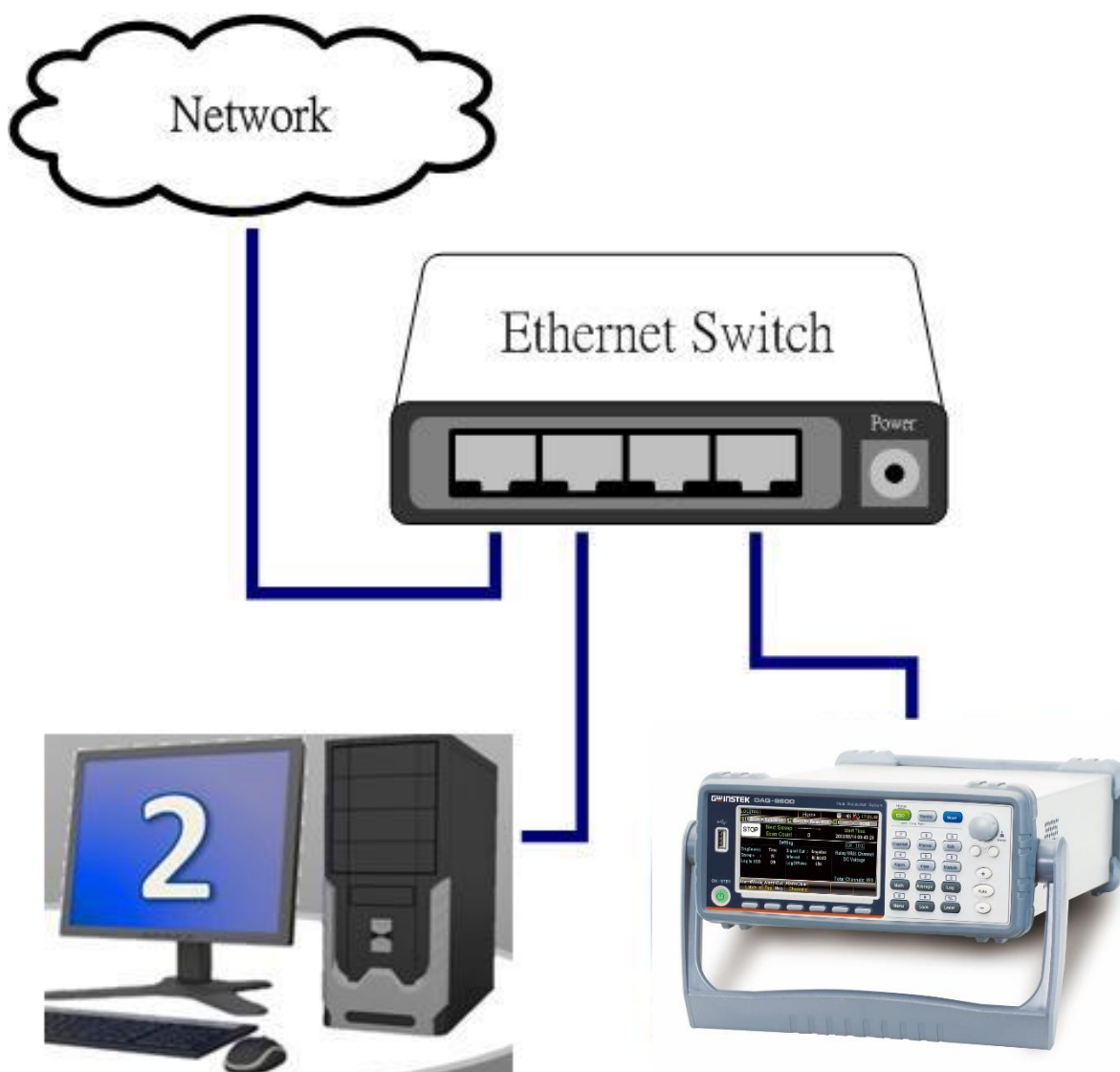
(NI MAX)

## Step1 ~ Connection Methods

- Method 1 : through Switch

### [NOTE]:

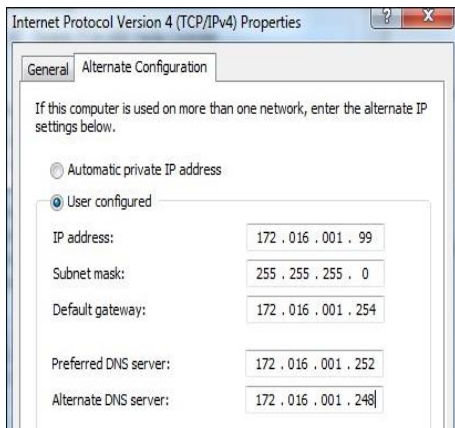
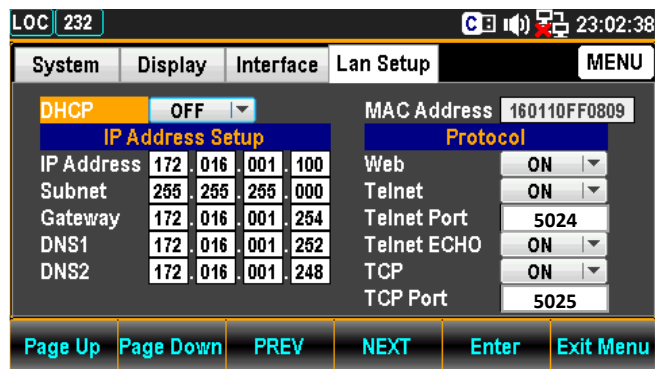
- It is easier making connection by Personal computer with IP settings automatically and DAQ-9600 with DHCP selected.



- Method 2 : direct connection

[NOTE]:

- Personal computer must use fixed IP settings
- DAQ-9600 settings (see below): (Please refer to the example content completely)

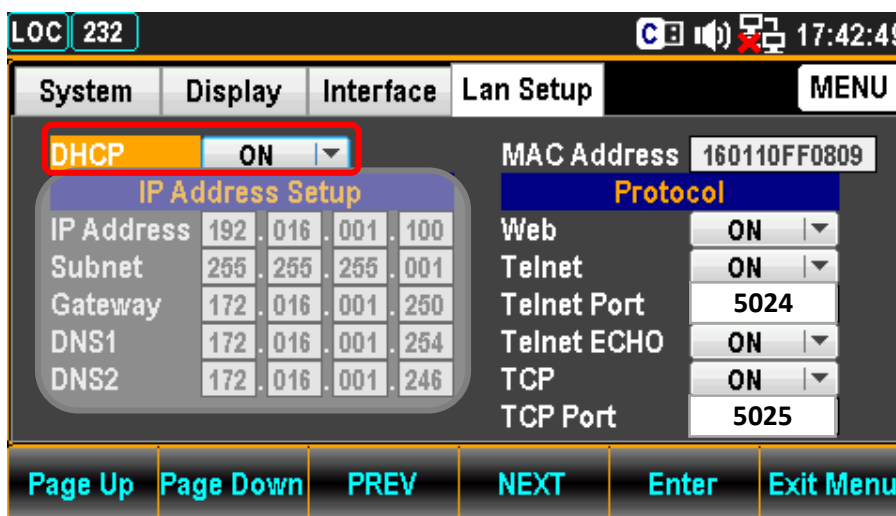


Step2 : Check DAQ system information for LAN configuration

[NOTE]

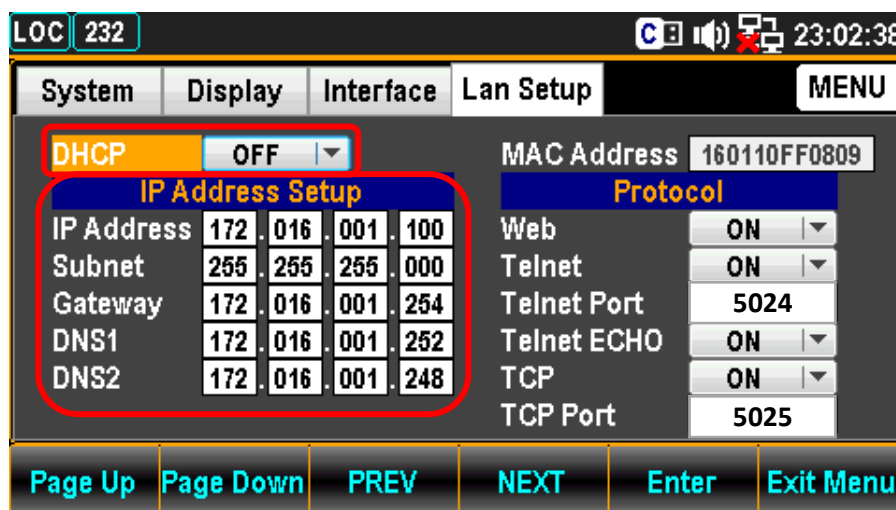
Please turn the DAQ-9600 OFF and then back ON to check the IP address after the I/O Model is selected to LAN and then DHCP Model either ON or OFF.

- DHCP Model : ON (Suitable for Method 1)

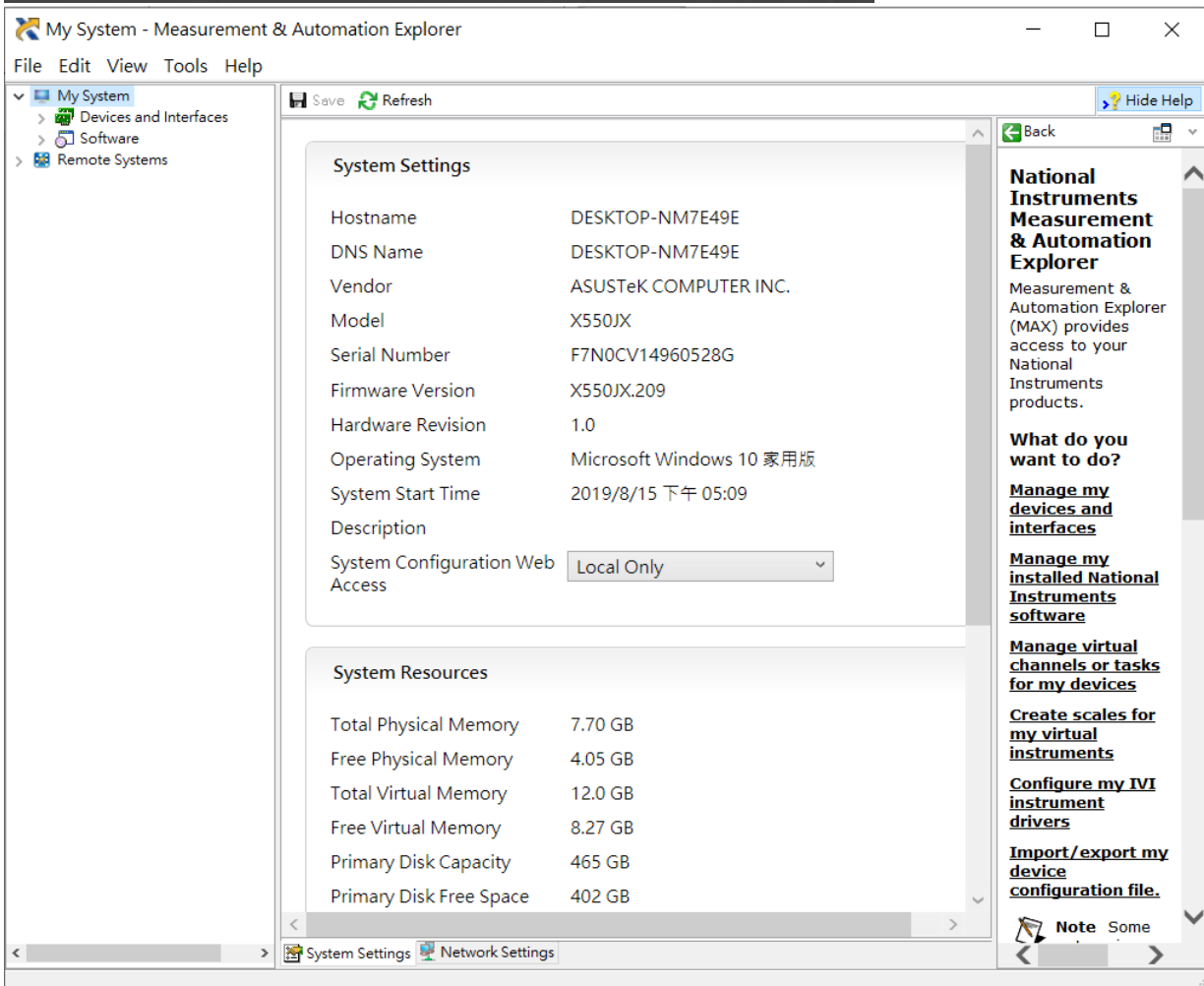
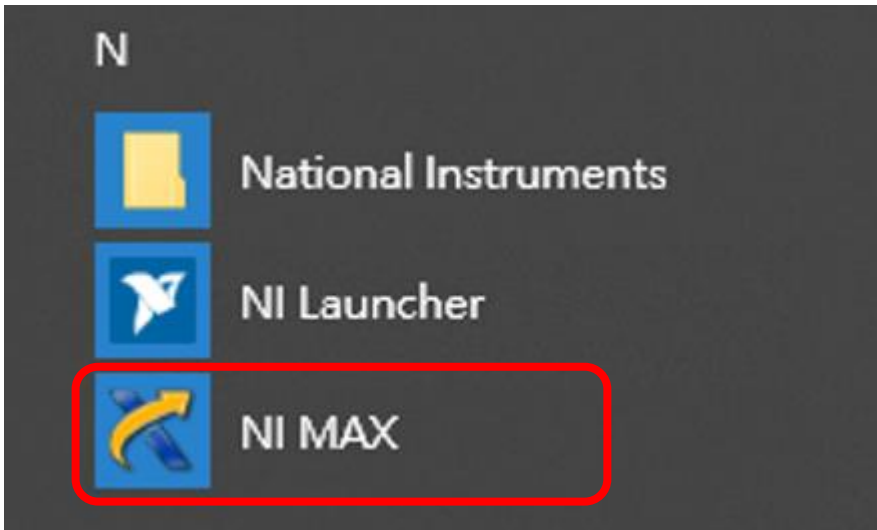


(When DHCP is set to ON, the IP Address Setup can't be edit.)

- DHCP Model : OFF (Suitable for Method 2)

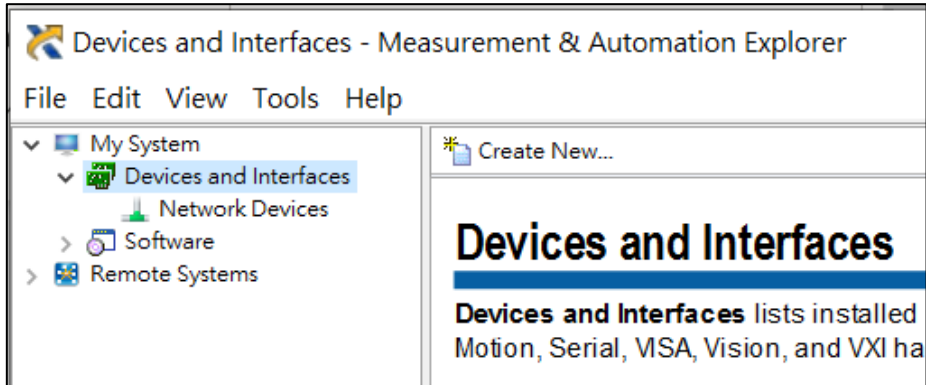


### Step3 : Open NI MAX



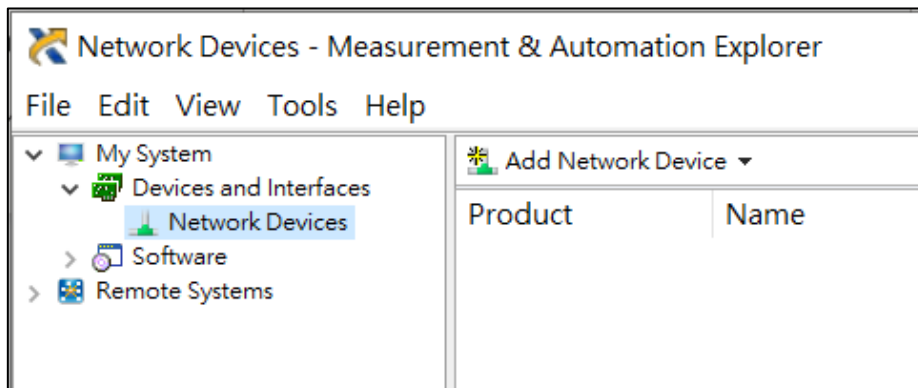
## Step4 : My System ~

- Click on **Devices and Interfaces**



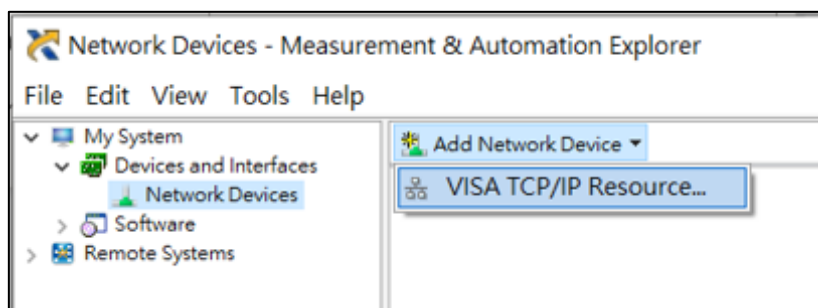
## Step5 : My System ~

- Select **Network Devices**

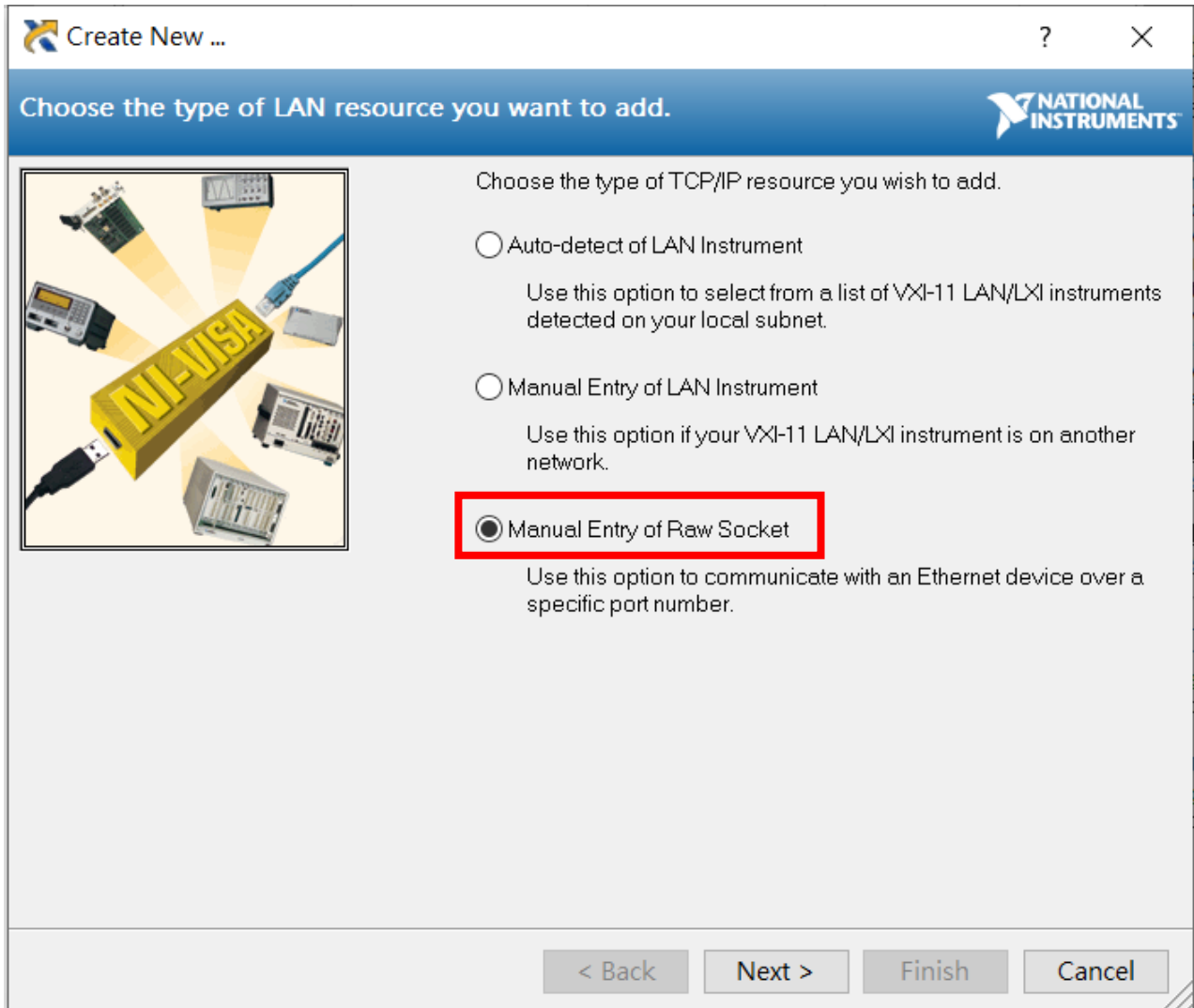


## Step6 : My System ~

- Click on **Add Network Device**
- Select **VISA TCP/IP Resource...**



Step7 : Create New... ~ Choose the type of LAN resource you want to add.



- Select **Manual Entry of Raw Socket**
- Press **Next >** to next step

Step8 : Create New... ~ Enter the LAN resource detailed.

Enter the LAN resource details.

Enter the TCP/IP address of your VISA network resource in the form of xxx.xxx.xxx.xxx, the hostname of the device, or a computer@some.domain

Hostname or IP address  
172.16.1.100

Port Number  
5025

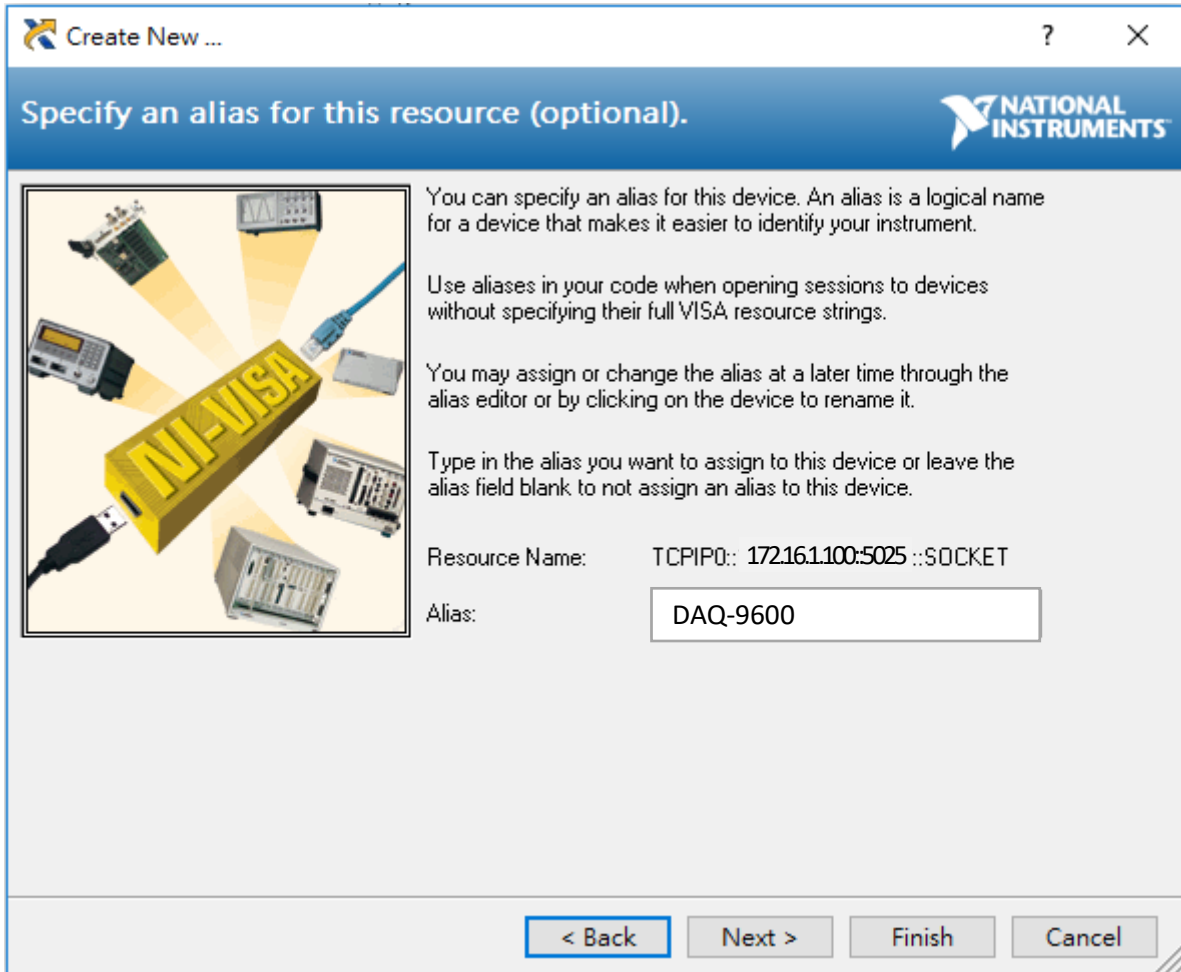
Validate

< Back   Next >   Finish   Cancel

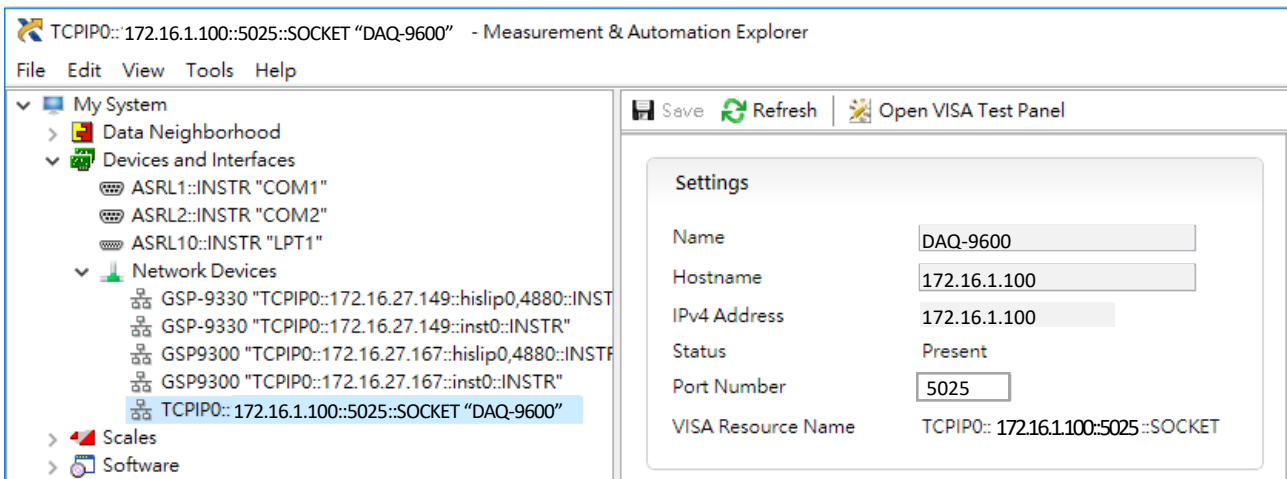
- Fill in **Hostname or IP address** : according to Step2
- Fill in **Port Number** : 5025
- Press **NEXT>**



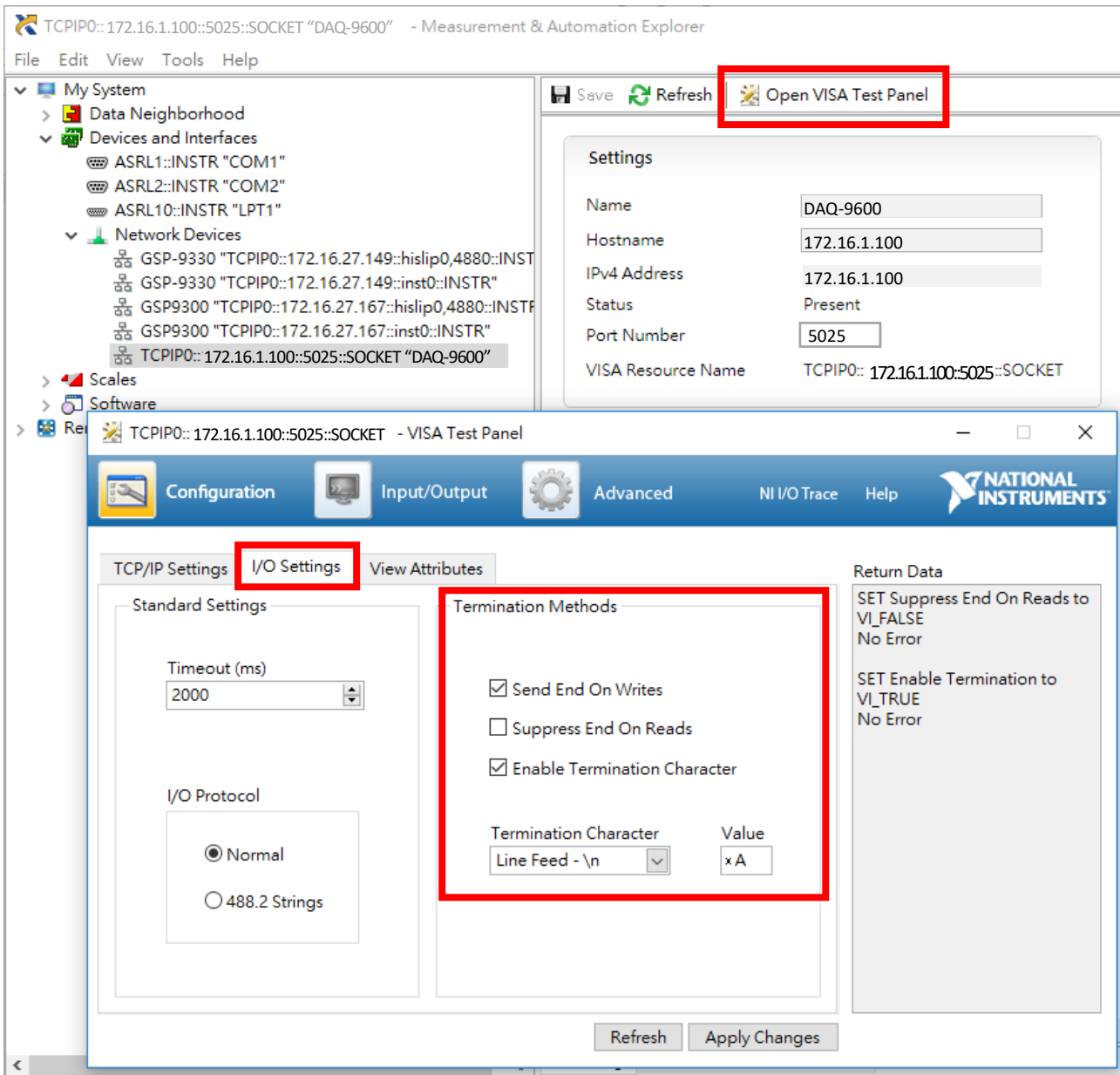
Step9 : Create New... ~ Specify an alias for the resource (optional)



- Fill in **Alias** : (if necessary)
- Press **Finish** to complete

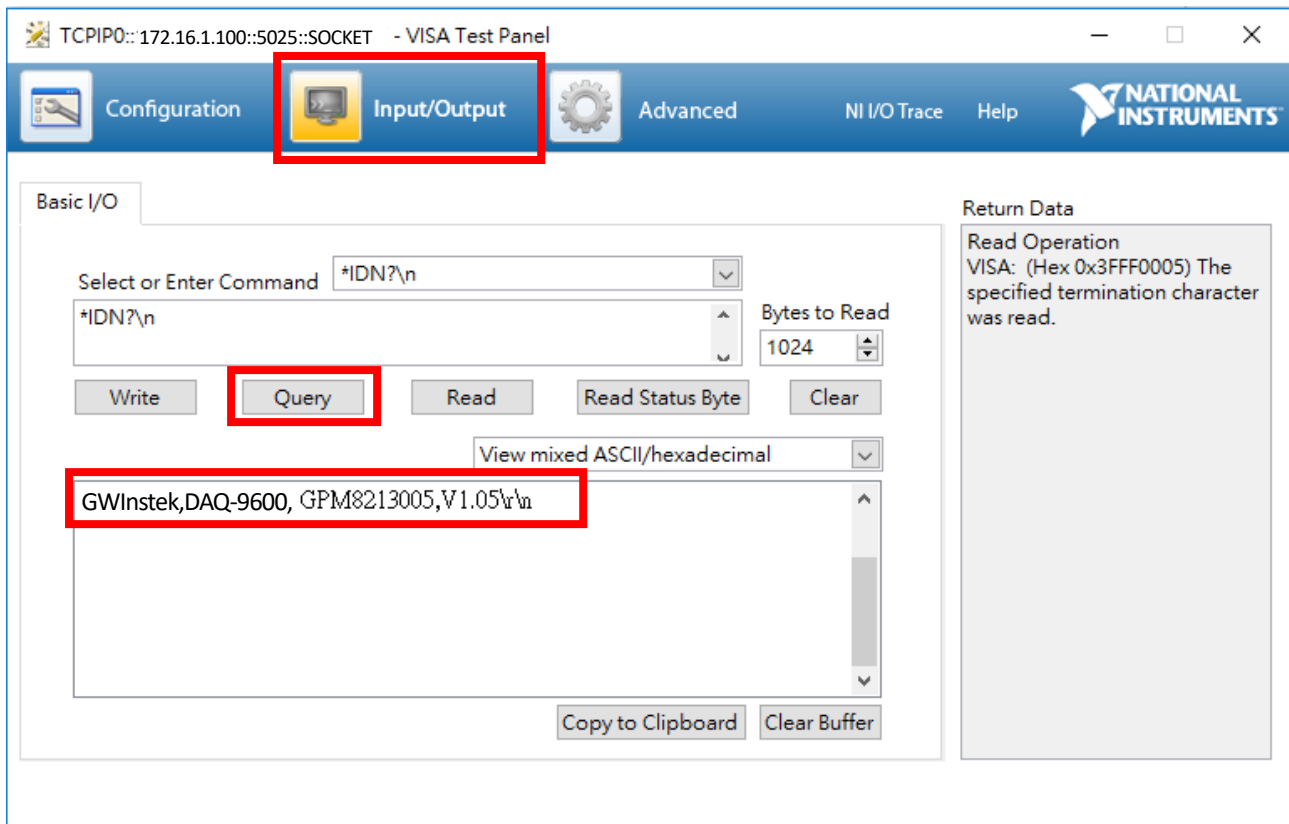


## Step10 : Open VISA Test Panel



- Click on **Open VISA Test Panel**
- Select **I/O Settings** of Configuration
- Set **Termination Methods** according picture (above)
- Press **Apply Changes** to complete setting

## Step11 : Send Command to confirm communication



- Click on **Input/Output**
- Press **Query** to send command (\*IDN?\n)
- DAQ-9600 response