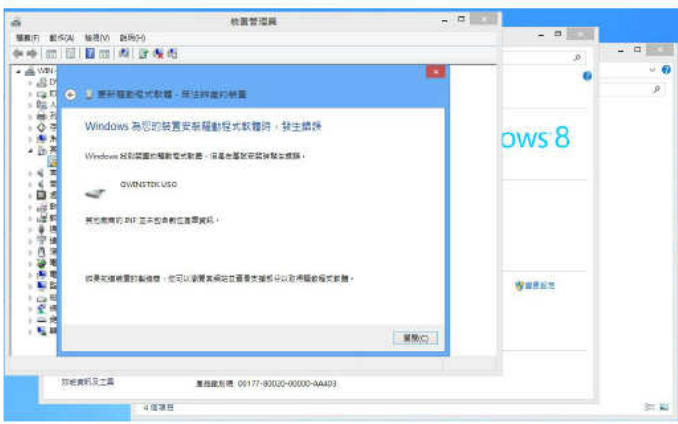
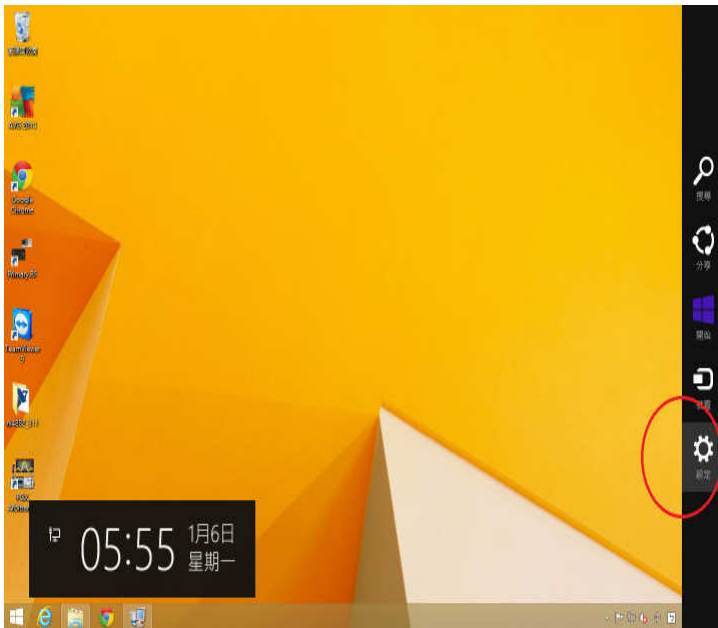


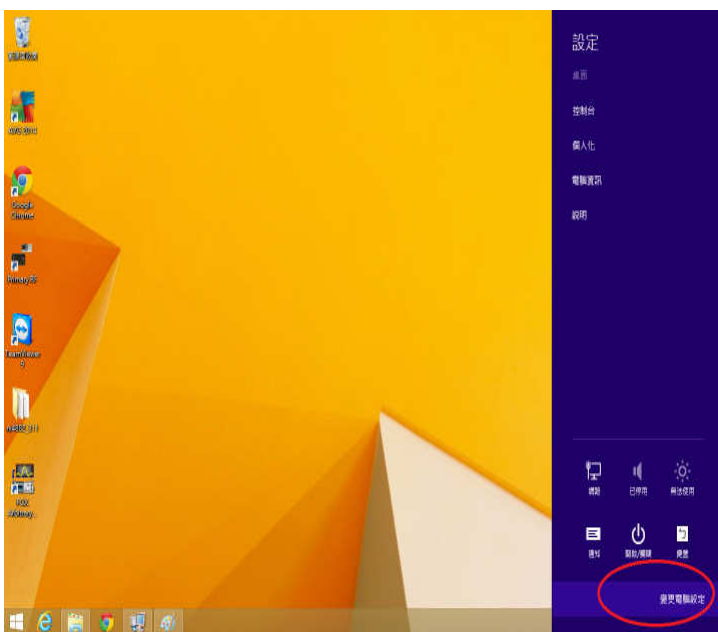
Show the unlicensed driver signature about program installation issue

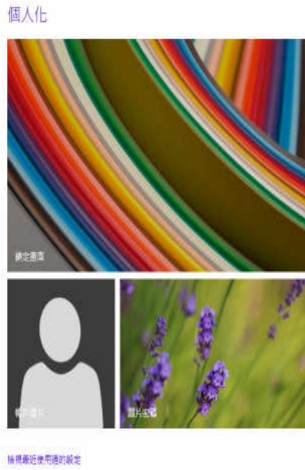


1. Select the Setting icon



2. Select Change PC settings





3. Select Update & Recovery

4. Select Recovery > Advanced startup > Reboot immediately

5. Select Troubleshoot



6. Select Advanced options

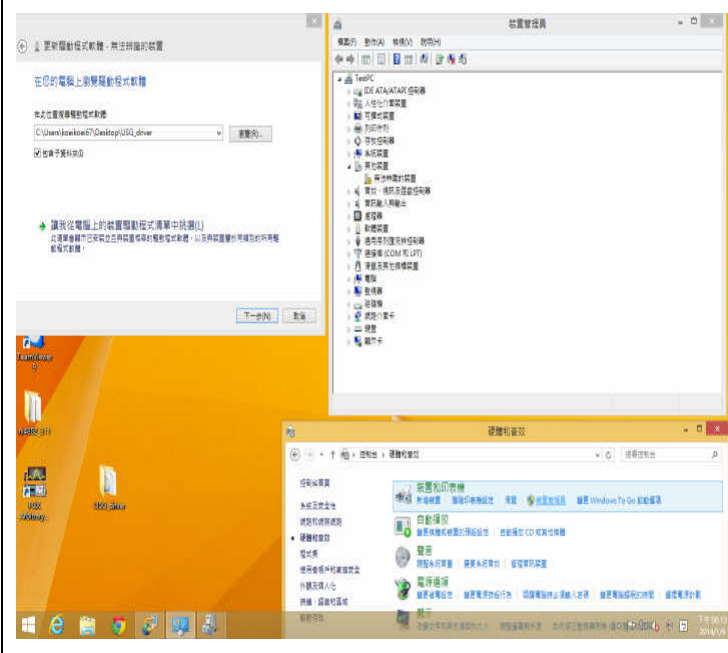


7. Startup Settings Advanced startup options (including safe mode)



8. Select Reboot

9. Select F7 key to stop driver compulsory signature



8. After Reboot PC, manual install the driver under Device Manager