

GRA-431

# GW INSTEK

組裝說明書

固緯料號: 82RA-43100M01

This assembly manual contains proprietary information, which is protected by copyrights. All rights are reserved. No part of this manual may be photocopied, reproduced or translated to another language without prior written consent of Good Will company.

The information in this manual was correct at the time of printing. However, Good Will continues to improve products and reserves the rights to change specification, equipment, and maintenance procedures at any time without notice.

Good Will Instrument Co., Ltd.  
No. 7-1, Jhongsing Rd., Tucheng Dist., New Taipei City 236, Taiwan.



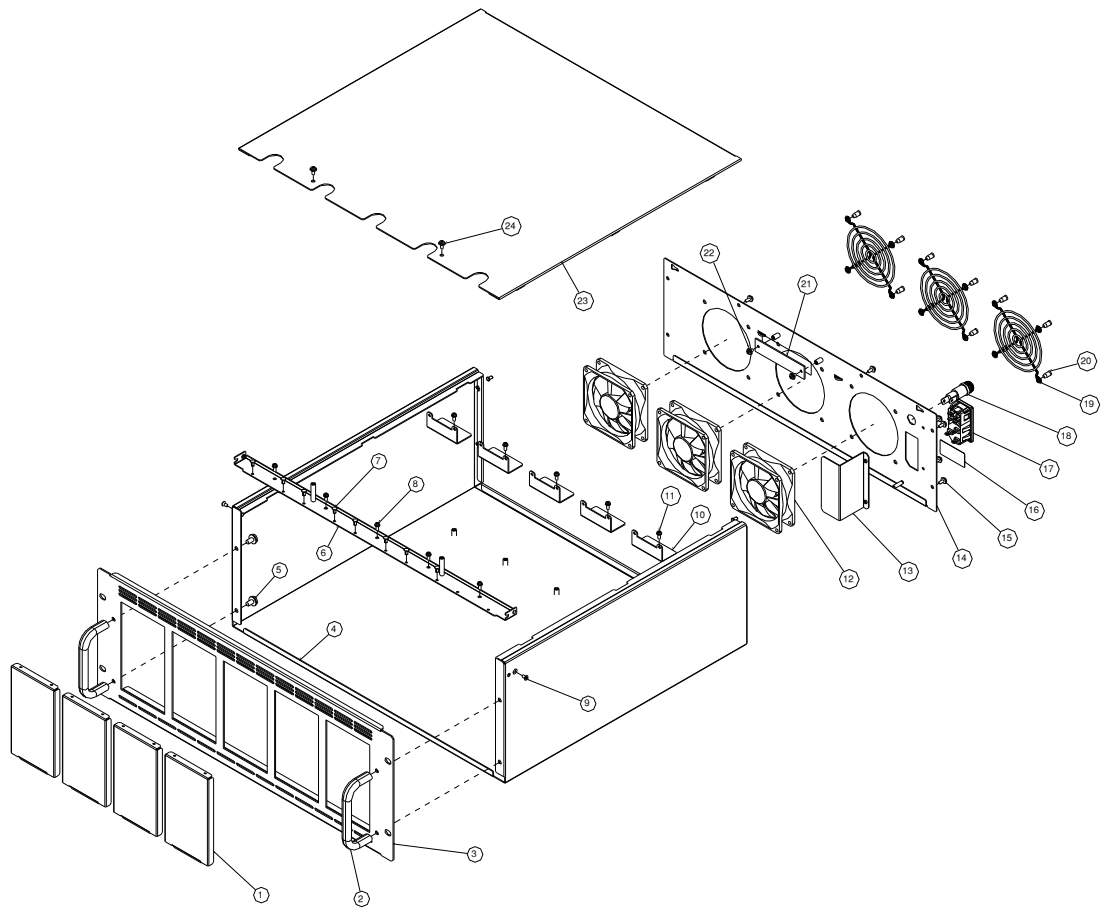
ISO-9001 CERTIFIED MANUFACTURER

**GW INSTEK**

# GRA-431 零件明細

## EIA 零件明細

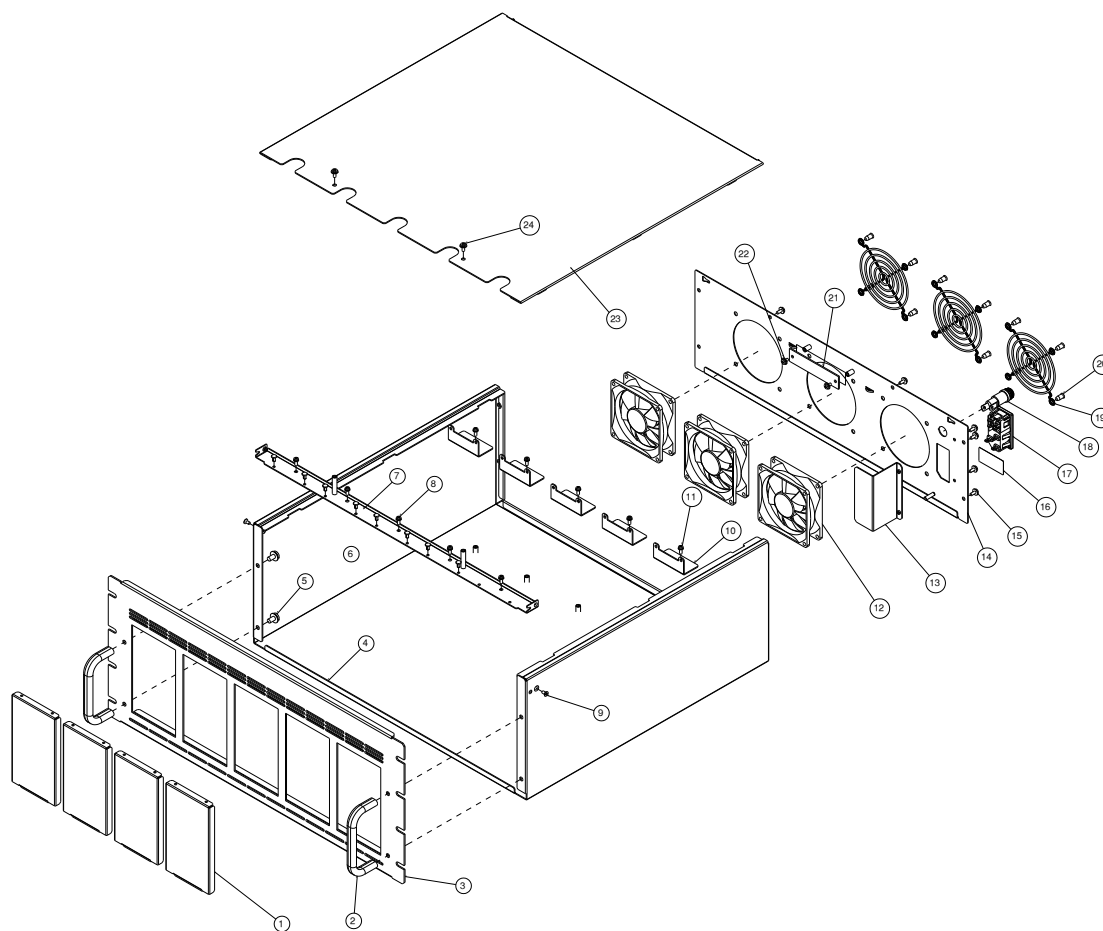
項目	料號	說明	數量
1	62RA-431SC101	COVER PLATE	4
2	62SU-03AHD101	62SU-03AHD101	2
3	62RA-431FP101	EIA FP	1
4	62RA-431LO101	LO	1
5	594B-W5010NS1	BMS-W-5X10	4
6	62RA-431HP201	FP HP	1
7	5320-00603511	SR-3L	8
8	592B-W3008NS1	PMS-W 3X8	5
9	593B-03006NS1	FMS 3X6	8
10	62RA-431HP101	RACK HP	5
11	592B-W3008NS1	PMS-W 3X8	5
12	3812-16100101	FAN(Vin_ac:100V)	3
	3812-26100101	FAN(Vin_ac:200V)	3
13	62RA-431HP301	RP HP	1
14	62RA-431RP101	RP	1
15	594B-W3008NS1	BMS-W-3X8	8
16	5802-04050901	電壓標示-100	1
	5802-04051001	電壓標示-200	1
17	3610-01002601	翹板開關	1
18	37H2-52000201	保險絲座	1
19	62BT-120SP101	風扇網	3
20	593B-05010N31	FAN SCREW 5*10	12
21	13RA-4310010	FAN PCB	1
22	594B-W3008NS1	BMS-W-3X8	2
23	62RA-431UP101	UP	1
24	594B-W3008NS1	BMS-W-3X8	2



JIS 零件明細

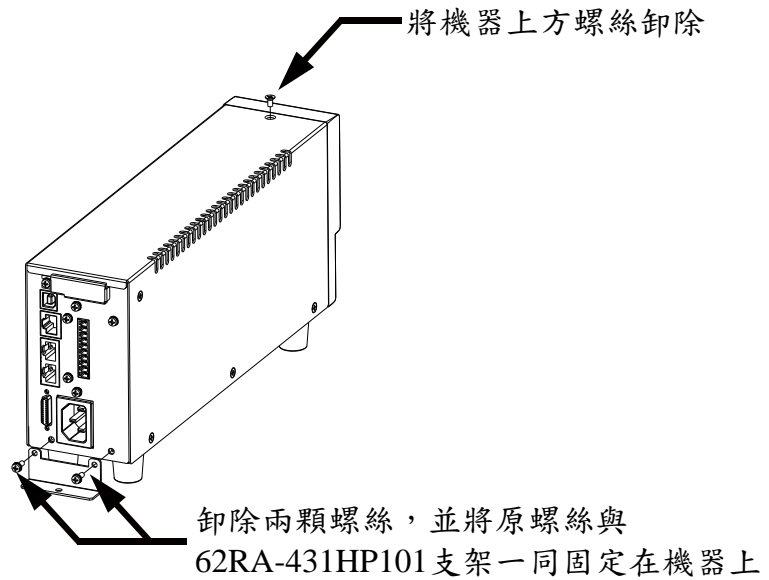
項目	料號	說明	數量
1	62RA-431SC101	COVER PLATE	4
2	62SU-03AHD101	62SU-03AHD101	2
3	62RA-431FP201	JIS FP	1
4	62RA-431LO101	LO	1
5	594B-W5010NS1	BMS-W-5X10	4
6	62RA-431HP201	FP HP	1
7	5320-00603511	SR-3L	8
8	592B-W3008NS1	PMS-W 3X8	5
9	593B-03006NS1	FMS 3X6	8
10	62RA-431HP101	RACK HP	5
11	592B-W3008NS1	PMS-W 3X8	5
12	3812-16100101	FAN(V <sub>in_ac</sub> :100V)	3
	3812-26100101	FAN(V <sub>in_ac</sub> :200V)	3
13	62RA-431HP301	RP HP	1
14	62RA-431RP101	RP	1
15	594B-W3008NS1	BMS-W-3X8	8
16	5802-04050901	電壓標示-100	1

	5802-04051001	電壓標示-200	1
17	3610-01002601	翹板開關	1
18	37H2-52000201	保險絲座	1
19	62BT-120SP101	風扇網	3
20	593B-05010N31	FAN SCREW 5*10	12
21	13RA-4310010	FAN PCB	1
22	594B-W3008NS1	BMS-W-3X8	2
23	62RA-431UP101	UP	1
24	594B-W3008NS1	BMS-W-3X8	2

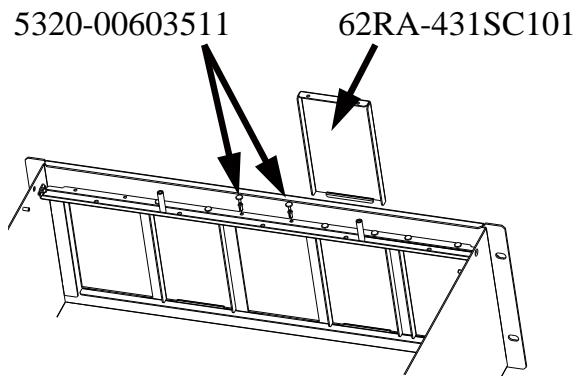


## 上機櫃前準備事項

1. 卸除風扇模組與上蓋。



2. 以徒手方式移除黑色塑膠鉗釘，即可徒手移除封板。



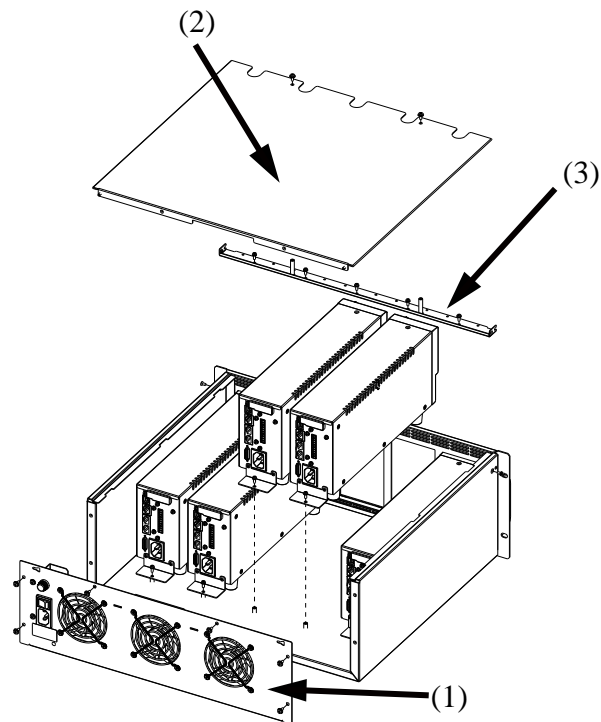
注意

62RA-431SC101 依實際需求決定拆卸數量。

## 機器上 Rack 組裝示意圖(EIA 與 JIS 相同)

步驟

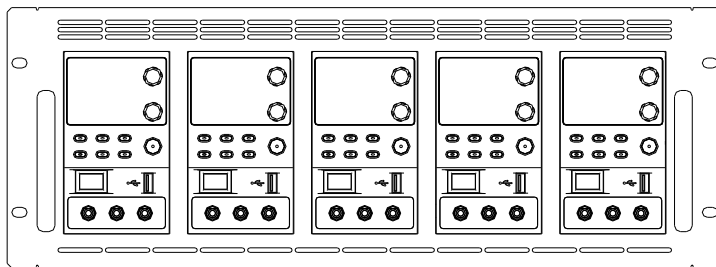
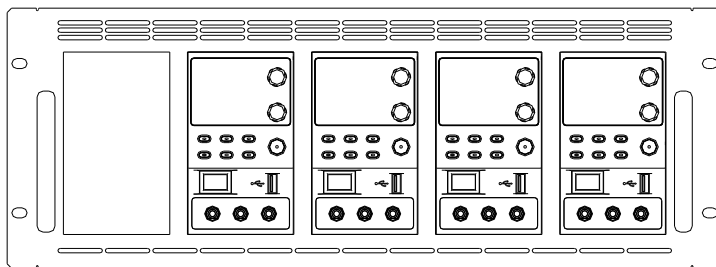
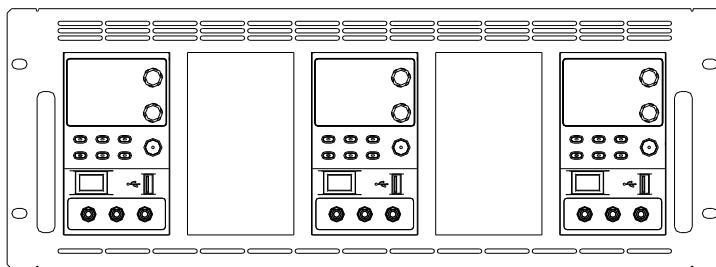
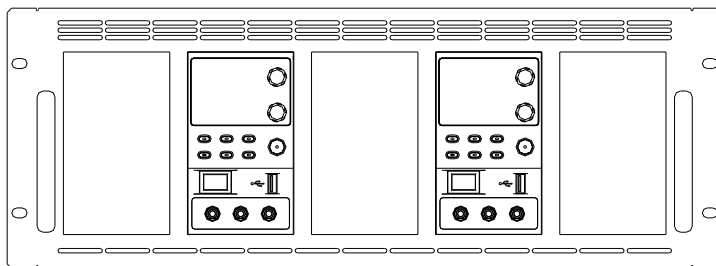
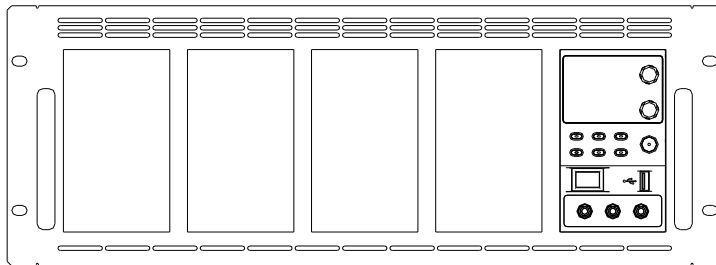
1. 卸除風扇模組。
2. 卸除上蓋 62RA-431UP101。
3. 卸除 62RA-431HP201。



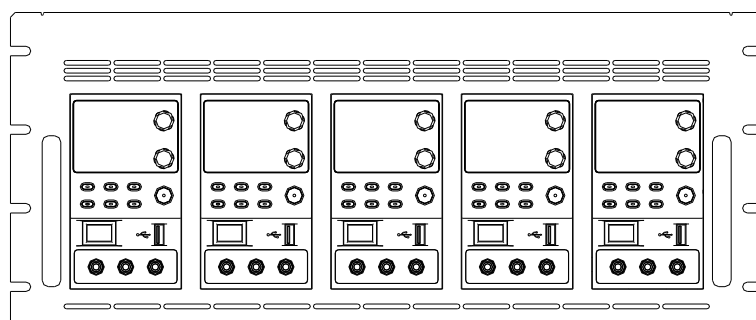
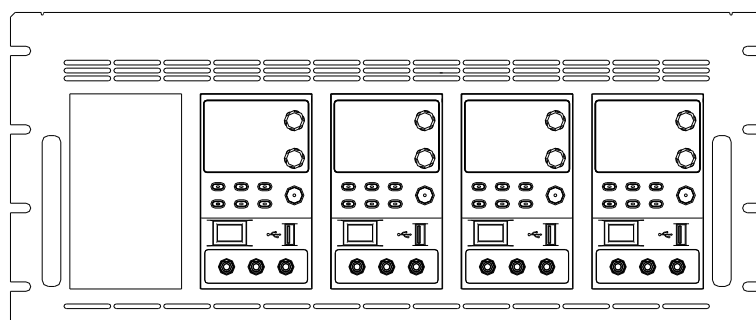
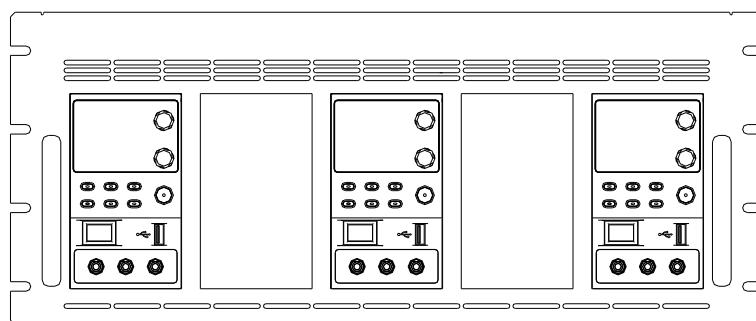
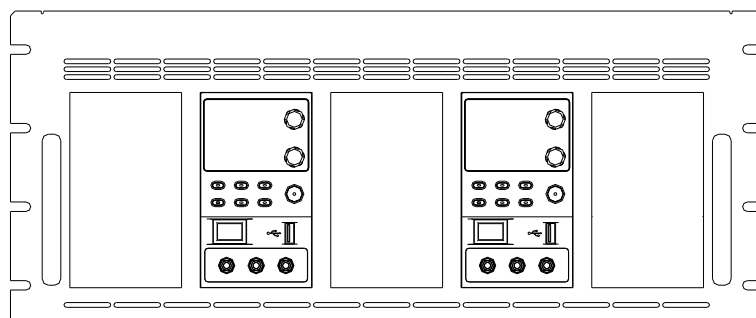
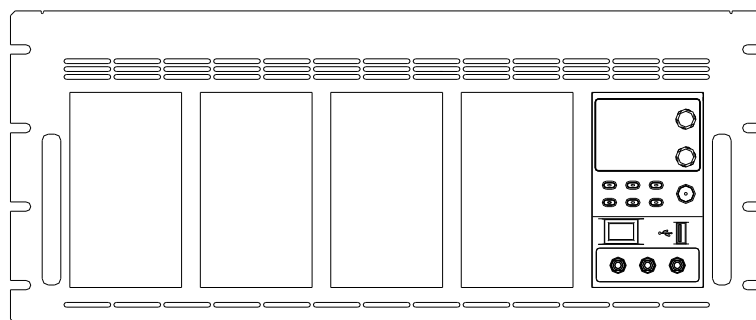
依照 1.2.3 步驟完成後，即可將預先準備好的機器如圖示安裝

# GRA-431 正面外觀圖

GRA-431-E

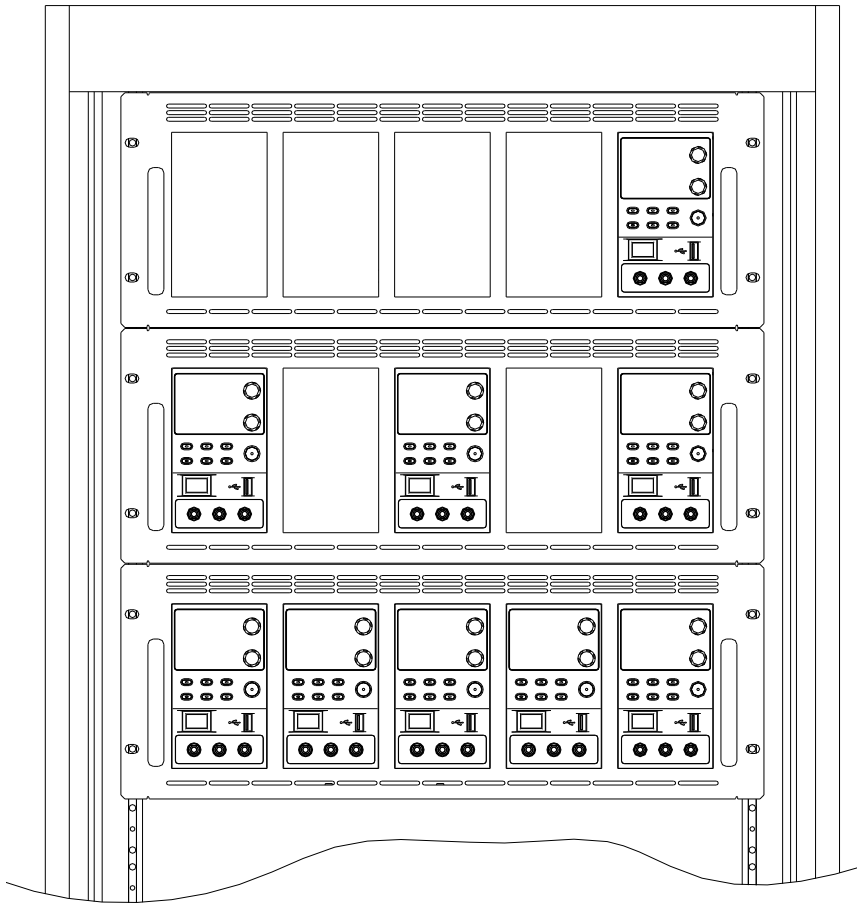


GRA-431-J





## 19 吋標準機櫃安裝正面示意圖



### 注意事項：

- 請留意機櫃有分 EIA 與 JIS 兩種，尺寸不相同會導致無法組裝。
- 安裝過程中可在機櫃下方左右兩側增加 L 型角鐵可增加其強度。
- L 型角鐵厚度不得超過 2.0mm。
- GRA-431 如安裝兩台以上機器，需安裝風扇避免 OTP 的情況發生。