

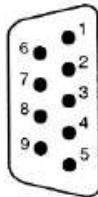
RS-232 Communication for PSP-Series

Table of Content:

A.Connect checking	2
B. Communication example:.....	3
C. Recommend List for USB to RS-232 Converter	5

A.Connect checking

Refer user manual P23~23, check the RS-232 cable pin assignment:



1. No connection
2. Receive Data(RxD) (input)
3. Transmit Data(TxD) (output)
4. +12V Input(*) (input)
5. Signal Ground(GND)
6. No connection
7. No connection
8. No connection
9. No connection

*Note: This pin needs a constant high signal (+12V).

Figure 1 Pin assignments of the RS232 connector on the rear panel for DB-9-D

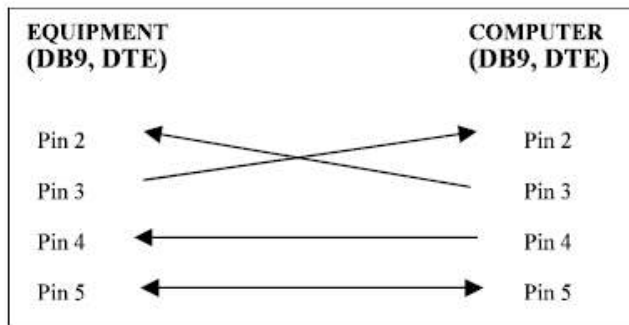


Figure 2 Wiring configuration for DB9 to DB9

Pin 2, 3, 4 and 5 must connected

Equipment Pin2 connect to Computer Pin3

Equipment Pin3 connect to Computer Pin 2

Make sure key in the RS-232 message terminator

RS232 message terminator

The power supply has 25 commands available. Every command is end up with <cr> (ASCII 0Dh or ACSCII 0D 0A acceptable). The return message <cr>of the power supply is CR/LF (ASCII 0D 0A).

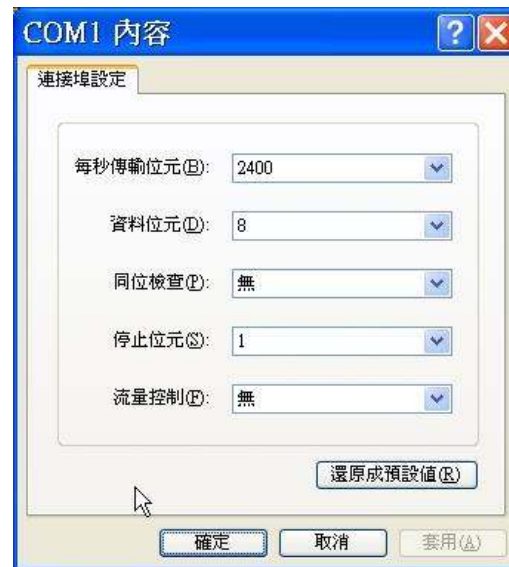
B. Communication example:

Run “Hyper Terminal”

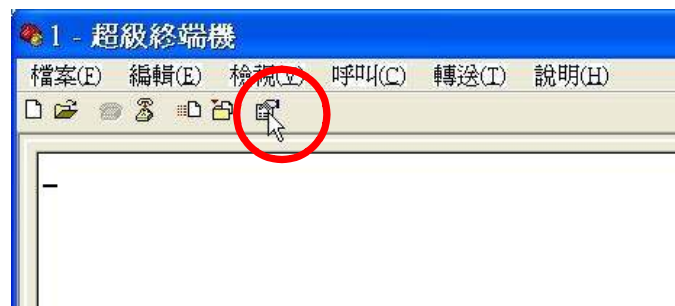


Make sure the configuration as below:

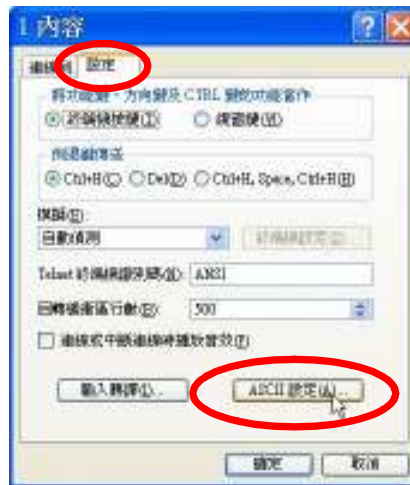
- Bits per second: 2400
- Data bits: 8.
- Parity: None.
- Stop bits: 1.
- Flow Control: None



Press properties Icon (Red circle)



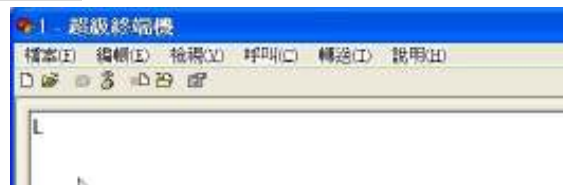
Select “Setting” and press “ASCII setup” Icon. (Red circles).



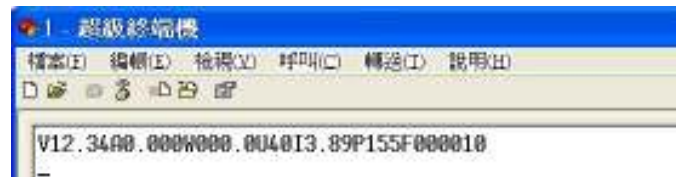
Select “Echo typed characters locally” setting.(Red circle)



Type “L” the press “Enter”



PSP detail information would shows in the screen.



C. Recommend List for USB to RS-232 Converter

Because there is variety of USB-TO-RS232 converters in the market with different Hardware/Software/Drivers design. Not all of these converts could support the RS-232 communication for PSP-Series. We only recommend 2 models for USB-TO-RS232 converter for PSP-Series:

Manufacture	Model Name and Descriptions
ADVANTECH, Taiwan	ADAM-4562 1-port Isolated USB to RS-232 Converter
MOXA, Taiwan	UPort U1110 1-port RS-232 USB to Serial Adaptor