

GDM-8261A

6 1/2 Digit Dual Measurement Multimeter

FEATURES

- 6 1/2 Digit Display : 1,200,000 Counts
- DCV Basic Accuracy : 0.0035%
- Dual Measurements to Perform Two Selected Measurements Simultaneously
- Bright Vacuum Fluorescent Display (VFD)
- 11 Measurement Functions & 10 Math Functions
- High Resolution : Up to 100pA Resolution with DCI and 1nA with ACI Measurements
- Temperature Measurement (RTD & Thermocouple) From -200°C ~ +1820°C
- High Data Transmission Speed : Up to 2,400 readings/s Through USB Interface
- Standard Interfaces : USB, RS-232C, Digital I/O
- Optional Interfaces : GPIB or LAN
- Optional Scanner Card : GDM-SC1A (V ch x 16, I ch x 2)
- Free PC Software : Excel ADD-In, LabVIEW Driver

GW INSTEK
Simply Reliable

Boost Your Measurement Speed & Efficiency

The GDM-8261A is a high precision 6 ½ digit Digital Multimeter with dual measurement displays, 11 measurement functions and 10 math functions at high accuracy (35ppm DC voltage accuracy) to accommodate the most frequently performed parameter measurements in various application fields today.

The GDM-8261A adopts a scanner card, which carries 16 V-Channels and 2 I-Channels, to facilitate the measurements of multiple-test points on either a device or multiple devices all at a press of a button. With this multi-point measurement capability, the GDM-8261A can be used as a semi-auto ATE System to increase the throughput of manufacturing test or as a data logger to perform long term monitoring or characterization of a DUT. A PC Software, DMM-Viewer, is available with GDM-8261A to support multi-channel panel setting and data logging of the scanner card. Besides, a LabVIEW driver is also supported to help user create his/her own virtual instrument on the PC screen for easy programming. For ATE system measurements or remote control applications, both USB and RS-232C Interfaces are provided as standard, and either GPIB or LAN can be selected as optional interface for the GDM-8261A.

A. IDEAL FOR BENCH ASSIGNMENTS



The GDM-8261A includes all the basic measurement functions that are required for engineers to handle design, development and testing jobs for electronic circuits or products. The basic measurement functions include voltage, current, resistance, diode, continuity, frequency and temperature. Remarkably, the current measurement function covers a very wide range from 100 μ A to 10A for DC current (in 6 ranges) and from 1mA to 10A for AC current (in 5 ranges). In addition, the GDM-8261A features 10 Math functions (dBm, dB, compare and other mathematical operations) to accommodate specific measurement requirements and complex measurement applications.

B.



1st Display	2nd Display					
	ACV	DCV	ACI	DCI	Hz/P	2W/4W*
ACV	✓	✓	✓	✓	✓	-
DCV	✓	✓	✓	✓	✓	-
ACI	✓	✓	✓	✓	✓	-
DCI	✓	✓	✓	✓	✓	-
Hz/P	✓	✓	✓	✓	✓	-
2W/4W*	-	-	-	-	-	✓

Unlike most of the “dual display” digital multimeters, which show test result on the primary display and range information on the secondary display, the GDM-8261A is able to perform two measurement functions simultaneously and shows the test results on primary display and secondary display respectively.

The GDM-8261A supports an almost unlimited number of measurement combinations of dual measurement functions, besides the normal test result and range information displays, greatly increases the test speed of multi-function measurement tasks.

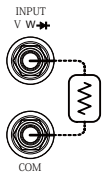
C.

Mode	Resolution	DCV/DCI/Resistance Measurement Speed
Fast	4 ½ digits	2,400 readings/second
Medium	5 ½ digits	600 readings/second
Slow	6 ½ digits	30 readings/second

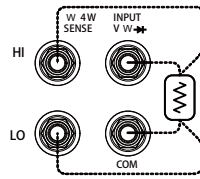
The GDM-8261A offers an exceptionally high resolution of 0.1 μ V for voltage measurement, 100pA for DC current measurement, 1nA for AC current measurement, and 100 μ Ω for Resistance measurement. This level of resolution and accuracy becomes a must for the precision measurements in specific applications. In addition, the GDM-8261A is capable of acquiring 30 measurement readings/s at the display resolution of 4 ½ digits and 2,400 readings/s at the display resolution of 6 ½ digits. The fast acquisition rate of the GDM-8261A adequately meets today's measurement demands.

D. 2/4 WIRE RESISTANCE MEASUREMENT

2W connection



4W connection



The GDM-8261A offers two methods, both 2-wire and 4-wire, for resistance measurements. The 2-wire measurement is most commonly used for resistance measurement in the range from 100Ω to 10kΩ. Whereas the 4-wire connection is normally applied for resistance measurement at a value lower than 100Ω. When applied, 4-wire measurement automatically compensates the test lead resistance and connector contact resistance to get an accurate measurement result.

E. STORE / RECALL FUNCTION



The GDM-8261A is able to acquire and record 2 ~ 9999 measurement readings for the “store” and “recall” functions. This allows an immediate observation of the maximum, minimum, average or standard deviation values of all the recorded data whenever the data acquisition stops.

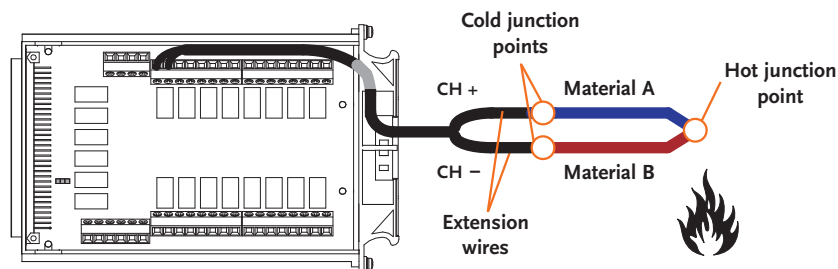
F.



The “Math” function of GDM-8261A includes four mathematical operations for measurements: MX+B, 1/X, Percentage and Stats. “MX+B” multiplies the measurement reading (X) by a factor (M) and adds/subtracts an offset value (B) to calculate linear offsets or scales. The “1/X” function divides 1 by the measurement reading (X), calculating the inverse of the reading. The “Percentage” function calculates the ratio of the measured value to a target value using the

following equation: $(\text{Reading } X - \text{Reference}) / \text{Reference} \times 100\%$. The “Stats” function makes statistical calculations continuously or by a user-defined measurement counts. The statistical calculations include Maximum, Minimum, Average and Standard deviation. With these mathematical operations, the GDM-8261A makes complex measurements quick and easy without the complexity of manual calculations.

G.



The GDM-8261A performs temperature measurement accommodating a wide range of temperature sensors of either thermocouples or RTD (Resistive Temperature Detectors). For thermocouples, the GDM-8261A uses voltage measurement terminals as the thermocouple input and calculates the temperature from the voltage fluctuation. Most of the

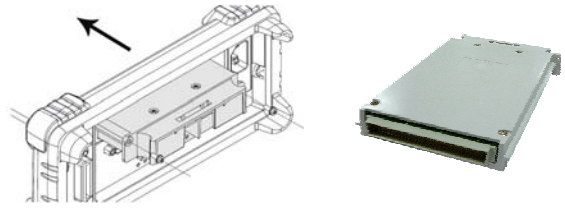
popular thermocouple types are supported for temperature measurement on the GDM-8261A. For RTD sensors, the GDM-8261A calculates the voltage fluctuation arisen from the resistance variation due to temperature change. Either front panel terminals or scanner card terminals can be used as the input for temperature sensor.

H. VERSATILE INTERFACES WITH FAST TRANSMISSION SPEED



For system applications, the GDM-8261A provides USB interface and RS-232C interface as standard. Up to 2,400 readings/s of data can be transferred over USB in ASCII format. Either GPIB or LAN interface is available as an option to support the ATE systems currently in use.

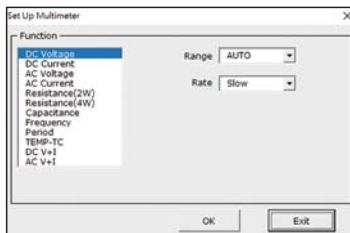
I. MULTIPOINT SCANNER CARD MEASUREMENT



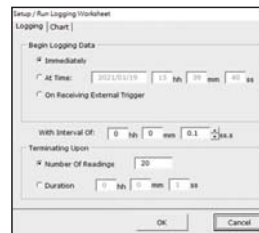
The optional scanner card, with a field-installable design, is a self-contained multipoint measurement solution. This approach eliminates the complexities of software development for multipoint measurement and data processing. The scanner card allows users to effectively measure multiple channels connected to a single GDM-8261A.

J. CONVENIENT PC SOFTWARE

Excel ADD-In



Function Control

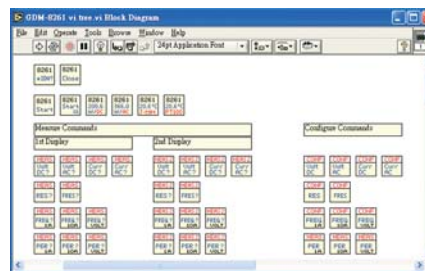


Log Configuration



Panel Setting & Data Acquisition for All Scanner Channels

LabVIEW Driver

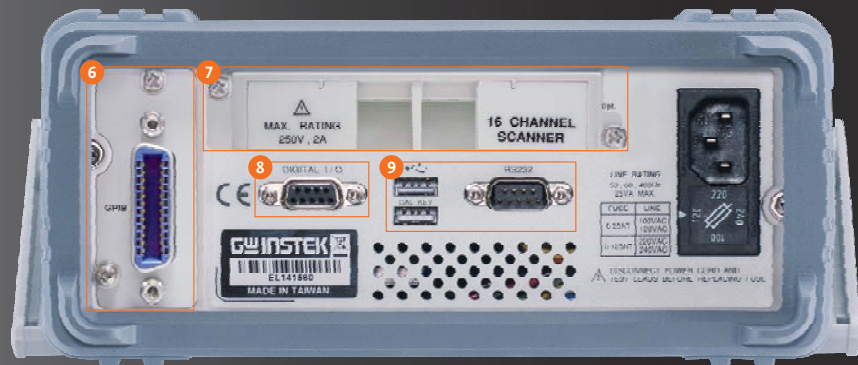


For the convenience of remote control and long time data acquisition, a free software, Excel ADD-In, is supported with the GDM-8261A. This software allows user to remotely control the GDM-8261A without the need to give commands or to develop programming software. For the data capture through a PC, the software allows user to continuously observe the measurement results before saving them into a file. When GDM-8261A works with scanner card for multi-point measurements, the Excel ADD-In allows user to easily select the

measurement function and range for each channel and start acquiring measurement data promptly. The GDM-8261A LabVIEW driver is also available for free download. With this driver, the user is able to create a virtual instrument on the PC for the instrument control. With Excel ADD-In & LabVIEW driver, the GDM-8261A becomes a high value semi-auto ATE system without further software/hardware investments.

PANEL INTRODUCTION

1. The 11 measurement functions can be selected at a button press; making operations easy and intuitive.
2. Dual VFD displays show the results of two different measurement functions simultaneously
3. Both 2-Wire and 4-Wire resistance measurements are supported. The low current measurement and high current measurement are made through different inputs
4. Two low DC current ranges (100 μ A and 1mA) are available for high resolution measurements down to 100pA detail
5. A number of built-in math functions are included : MX+B, 1/X, % and statistics (max/min/average/standard deviation)
6. Either GPIB or LAN communication is supported as optional
7. Flexible-sized screw terminals on scanner card to support a wide range of wire gauges for flexible compatibility
8. The Digital I/O port sends out a signal of compare measurement result for external devices control. Additionally, the Digital I/O port can also be used as a power source for TTL & COMS logic.
9. USB and RS-232C communication ports facilitate the high speed communication



Accuracy : \pm (% of reading + % of range) for 1-hour warm-up at 6 1/2 digits, slow mode

DC SPECIFICATIONS

FUNCTION	Range ^(*1)	Resolution	Test Current or etc.	24 Hours 23°C \pm 1°C	90 Days 23°C \pm 5°C	1 Year 23°C \pm 5°C	Temperature Coefficient 0°~18°C / 28°~55°C
DC VOLTAGE	100.0000 mV	0.1 μ V	10M Ω or >10G Ω	0.0030 + 0.0030	0.0040 + 0.0035	0.0050 + 0.0035	0.0005 + 0.0005
	1.000000 V	1 μ V	10M Ω or >10G Ω	0.0015 + 0.0004	0.0020 + 0.0005	0.0035 + 0.0005	0.0005 + 0.0001
	10.00000 V	10 μ V	10.1M Ω \pm 1%	0.0020 + 0.0006	0.0030 + 0.0007	0.0048 + 0.0007	0.0005 + 0.0001
	100.0000 V	0.1mV	10.1M Ω \pm 1%	0.0020 + 0.0006	0.0035 + 0.0006	0.0081 + 0.0006	0.0005 + 0.0001
	1000.000 V	1mV	10.1M Ω \pm 1%	0.0025 + 0.0006	0.0044 + 0.0010	0.0090 + 0.0010	0.0005 + 0.0001
RESISTANCE ^(*2)	100.0000 Ω	100 μ Ω	1 mA	0.0030 + 0.0030	0.008 + 0.004	0.010 + 0.004	0.0008 + 0.0005
	1.000000 k Ω	1m Ω	1 mA	0.0020 + 0.0005	0.008 + 0.001	0.010 + 0.001	0.0008 + 0.0001
	10.00000 k Ω	10m Ω	100 μ A	0.0020 + 0.0005	0.008 + 0.001	0.010 + 0.001	0.0008 + 0.0001
	100.0000 k Ω	100m Ω	10 μ A	0.0020 + 0.0005	0.008 + 0.001	0.010 + 0.001	0.0008 + 0.0001
	1.000000 M Ω	1 Ω	3.5 μ A	0.0020 + 0.0010	0.008 + 0.001	0.010 + 0.001	0.0010 + 0.0002
	10.00000 M Ω	10 Ω	350 nA	0.0150 + 0.0010	0.020 + 0.001	0.040 + 0.001	0.0030 + 0.0004
	100.0000 M Ω	100 Ω	350 nA//10 M Ω	0.3000 + 0.0100	0.800 + 0.010	0.800 + 0.010	0.1500 + 0.0002
DC CURRENT	100.0000 μ A	100pA	< 0.015 V	0.010 + 0.020	0.04 + 0.025	0.05 + 0.025	0.002 + 0.0030
	1.000000 mA	1nA	< 0.15 V	0.007 + 0.005	0.03 + 0.005	0.05 + 0.005	0.002 + 0.0005
	10.00000 mA	10nA	< 0.07 V	0.005 + 0.010	0.03 + 0.020	0.05 + 0.020	0.002 + 0.0020
	100.0000 mA	0.1 μ A	< 0.7 V	0.010 + 0.004	0.03 + 0.005	0.05 + 0.005	0.002 + 0.0005
	1.000000 A	1 μ A	< 0.8 V	0.050 + 0.006	0.08 + 0.010	0.10 + 0.010	0.005 + 0.0010
10.00000 A	10 μ A	< 0.5 V	0.100 + 0.008	0.12 + 0.008	0.15 + 0.008	0.005 + 0.0008	
CONTINUITY	1000.000 Ω	0.001 Ω	1 mA	0.002 + 0.030	0.008 + 0.030	0.010 + 0.030	0.001 + 0.002
DIODE TEST ^(*3)	1.000000 V	1 μ V	1 mA ^(*4)	0.002 + 0.010	0.008 + 0.020	0.010 + 0.020	0.001 + 0.002

Note : (*1) 20% overrange on all ranges, except 1000 Vdc/750Vac, 10A range and Continuity.
 (*2) Specifications are for 4-wire ohms function, or 2-wire ohms using REL function.
 (*3) Accuracy specifications are for the voltage measured at the input terminals only.
 (*4) Variation in the current source will create some variation in the voltage drop across a diode junction.

(*5) Specifications are for sinewave input >5% of range.
 (*6) 750 Vac range limited to 100 kHz
 (*7) Typically 30% of reading error at 1 MHz.
 (*8) Input > 100 mV. For 10 mV to 100 mV inputs, multiply % of reading error x10.
 (*9) Specifications do not include probe accuracy and relative to simulated junction

AC SPECIFICATIONS

FUNCTION	Range ^{(*)1}	Resolution	Frequency or etc.	24 Hours 23°C ± 1°C	90 Days 23°C ± 5°C	1 Year 23°C ± 5°C	Temperature Coefficient 0°~18°C / 28°~55°C
TRUE RMS AC VOLTAGE ^{(*)5}	100.0000mV	0.1 μV	3Hz~5Hz 5Hz~10Hz 10Hz~20kHz 20kHz~50kHz 50kHz~100kHz 100kHz~300kHz ^{(*)7}	1.00 + 0.03 0.35 + 0.03 0.04 + 0.03 0.10 + 0.05 0.55 + 0.08 4.00 + 0.50	1.00 + 0.04 0.35 + 0.04 0.05 + 0.04 0.11 + 0.05 0.60 + 0.08 4.00 + 0.50	1.00 + 0.04 0.35 + 0.04 0.06 + 0.04 0.12 + 0.05 0.60 + 0.08 4.00 + 0.50	0.100 + 0.004 0.035 + 0.004 0.005 + 0.004 0.011 + 0.005 0.060 + 0.008 0.200 + 0.020
	1.000000V~750.000 V ^{(*)6}	1 μV~1mV	3Hz~5Hz 5Hz~10Hz 10Hz~20kHz 20kHz~50kHz 50kHz~100kHz 100kHz~300kHz ^{(*)7}	1.00 + 0.02 0.35 + 0.02 0.04 + 0.02 0.10 + 0.04 0.55 + 0.08 4.00 + 0.50	1.00 + 0.03 0.35 + 0.03 0.05 + 0.03 0.11 + 0.05 0.60 + 0.08 4.00 + 0.50	1.00 + 0.03 0.35 + 0.03 0.06 + 0.03 0.12 + 0.05 0.60 + 0.08 4.00 + 0.50	0.100 + 0.003 0.035 + 0.003 0.005 + 0.003 0.011 + 0.005 0.060 + 0.008 0.200 + 0.020
TRUE RMS AC CURRENT ^{(*)5}	1.000000 mA	1nA	3Hz~5Hz 5Hz~10Hz 10Hz~5kHz 5kHz~10kHz	1.00 + 0.04 0.30 + 0.04 0.10 + 0.04 0.20 + 0.25	1.00 + 0.04 0.30 + 0.04 0.10 + 0.04 0.20 + 0.25	1.0 + 0.04 0.3 + 0.04 0.1 + 0.04 0.2 + 0.25	0.100 + 0.006 0.035 + 0.006 0.015 + 0.006 0.030 + 0.006
	10.00000 mA	10nA	3Hz~5Hz 5Hz~10Hz 10Hz~5kHz 5kHz~10kHz	1.10 + 0.06 0.35 + 0.06 0.15 + 0.06 0.35 + 0.70	1.10 + 0.06 0.35 + 0.06 0.15 + 0.06 0.35 + 0.70	1.10 + 0.06 0.35 + 0.06 0.15 + 0.06 0.35 + 0.70	0.200 + 0.006 0.100 + 0.006 0.015 + 0.006 0.030 + 0.006
	100.0000 mA	100nA	3Hz~5Hz 5Hz~10Hz 10Hz~5kHz 5kHz~10kHz	1.00 + 0.04 0.30 + 0.04 0.10 + 0.04 0.20 + 0.25	1.00 + 0.04 0.30 + 0.04 0.10 + 0.04 0.20 + 0.25	1.00 + 0.04 0.30 + 0.04 0.10 + 0.04 0.20 + 0.25	0.100 + 0.006 0.035 + 0.006 0.015 + 0.006 0.030 + 0.006
	1.000000 A	1μA	3Hz~5Hz 5Hz~10Hz 10Hz~5kHz 5kHz~10kHz	1.00 + 0.04 0.30 + 0.04 0.10 + 0.04 0.35 + 0.70	1.00 + 0.04 0.30 + 0.04 0.10 + 0.04 0.35 + 0.70	1.00 + 0.04 0.30 + 0.04 0.10 + 0.04 0.35 + 0.70	0.100 + 0.006 0.035 + 0.006 0.015 + 0.006 0.030 + 0.006
	10.00000 A	10μA	3Hz~5Hz 5Hz~10Hz 10Hz~5kHz 5kHz~10kHz	1.10 + 0.06 0.35 + 0.06 0.15 + 0.06 0.35 + 0.70	1.10 + 0.06 0.35 + 0.06 0.15 + 0.06 0.35 + 0.70	1.10 + 0.06 0.35 + 0.06 0.15 + 0.06 0.35 + 0.70	0.100 + 0.006 0.035 + 0.006 0.015 + 0.006 0.030 + 0.006
FREQUENCY ^{(*)8} PERIOD	100.0000 mV~750.000 V ^{(*)6}	—	3 Hz~5 Hz 5 Hz~10 Hz 10 Hz~40 Hz 40 Hz~300 kHz	0.1 0.05 0.03 0.006	0.1 0.05 0.03 0.01	0.1 0.05 0.03 0.01	0.005 0.005 0.001 0.001
TEMPERATURE(RTD) ^{(*)9}	-200 °C~600 °C	0.002°C	—	—	—	0.06°C (typical)	—
TEMPERATURE (THERMOCOUPLES) ^{(*)9}	-200 ~ +1372 °C -50 ~ +1870 °C	0.003°C 0.01°C	(J/K/N/T/E Type) (R/S/B Type)	—	—	0.2°C (typical) 1.0°C	0.004 °C / °C (typical) 0.14 °C / °C
DISPLAY	VFD, Two Colors Display						
INTERFACE	RS-232C, USB, Digital I/O						
POWER SOURCE	AC 100V/120V/220V/240V±10%, 45 Hz ~ 66 Hz and 360 Hz ~ 440 Hz						
DIMENSIONS & WEIGHT	265(W) x 107(H) x 350(D) mm, Approx. 3.1 kg						

Specifications subject to change without notice. DM-8261AGD2BH

ORDERING INFORMATION

GDM-8261A 6 ½ Digit Dual Measurement Multimeter

* Three-year warranty, excluding accessories.

ACCESSORIES

Quick star guide x 1, Power cord x 1, Test lead GTL-207A x 1, USB cable GTL-247 x 1, CD x 1 (including complete user manual, upgrade program and PC software), Calibration key GDM-01 x 1 (for firmware upgrade)

OPTION

GDM-SC1A Scanner Card (V ch x 16, I ch x 2)

GDM-82G1 GPIB Card

GDM-82L1 LAN Card

* Either GPIB or LAN can be installed on each GDM-8261A

OPTIONAL ACCESSORIES

GTL-108A 4W Type test lead

GTL-248 GPIB Cable, Approx. 2m

GTL-205A Temperature Probe Adaptor with Thermocouple (K type), Approx. 1m

GTL-232 RS-232C Cable, 9-pin Female to 9-pin, null Modem, Approx. 2m

GSC-014 Soft Carrying Case for DMM Accessory

GDM-TL1 Test Lead Set for All DMM

GRA-422 Rack Mount Kit (19" 2U)

FREE DOWNLOAD

PC Software Excel ADD-In, RS-232C/USB Interface Supported LabVIEW Driver

Global Headquarters

GOOD WILL INSTRUMENT CO., LTD.

No.7-1, Jhongsing Road, Tucheng Dist., New Taipei City 236, Taiwan

T +886-2-2268-0389 F +886-2-2268-0639

E-mail: marketing@goodwill.com.tw

China Subsidiary

GOOD WILL INSTRUMENT (SUZHOU) CO., LTD.

No. 521, Zhujiang Road, Snd, Suzhou Jiangsu 215011 China

T +86-512-6661-7177 F +86-512-6661-7277

Malaysia Subsidiary

GOOD WILL INSTRUMENT (SEA) SDN. BHD.

No. 1-3-18, Elit Avenue, Jalan Mayang Pasir 3,

11950 Bayan Baru, Penang, Malaysia

T +604-6111122 F +604-6115225

Europe Subsidiary

GOOD WILL INSTRUMENT EURO B.V.

De Run 5427A, 5504DG Veldhoven, THE NETHERLANDS

T +31(0)40-2557790 F +31(0)40-2541194

U.S.A. Subsidiary

INSTEK AMERICA CORP.

5198 Brooks Street Montclair, CA 91763, U.S.A.

T +1-909-399-3535 F +1-909-399-0819

Japan Subsidiary

TEXIO TECHNOLOGY CORPORATION.

7F Towa Fudosan Shin Yokohama Bldg., 2-18-13 Shin

Yokohama, Kohoku-ku, Yokohama, Kanagawa,

222-0033 Japan

T +81-45-620-2305 F +81-45-534-7181

Korea Subsidiary

GOOD WILL INSTRUMENT KOREA CO., LTD.

Room No.503, Gyeonginro 775 (Mullae-Dong 3Ga,

Ace Hightech-City B/D 1Dong), Yeongduengpo-Gu,

Seoul 150093, Korea.

T +82-2-3439-2205 F +82-2-3439-2207

India Subsidiary

GW INSTEK INDIA LLP.

No.2707/B&C, 1st Floor UNNATHI Building,

E-Block, Sahakara Nagar, Bengaluru-560 092. India

T +91-80-6811-0600 F +91-80-6811-0626

GW INSTEK

Simply Reliable



Website



Facebook



LinkedIn