

DMM Viewer

GDM8255_Demo

Remote Viewer Guide

GW INSTEK PART NO.



ISO-9001 CERTIFIED MANUFACTURER

GW INSTEK

This manual contains proprietary information, which is protected by copyrights. All rights are reserved. No part of this manual may be photocopied, reproduced or translated to another language without prior written consent of Good Will company.

The information in this manual was correct at the time of printing. However, Good Will continues to improve products and reserves the right to change specifications, equipment, and maintenance procedures at any time without notice.

Good Will Instrument Co., Ltd.

No. 7-1, Jhongsing Rd., Tucheng City, Taipei County 236, Taiwan.

T ABLE OF CONTENTS

I NTRODUCTION	4
C D-ROM OVERVIEW	5
I NSTALLATION	7
U NINSTALLATION / REPAIR	9
C ONNECTION & CONFIGURATION	11
M EASUREMENT	16
P LOT GRAPH/ SAVE	21
F IRMWARE/ VERSION	26

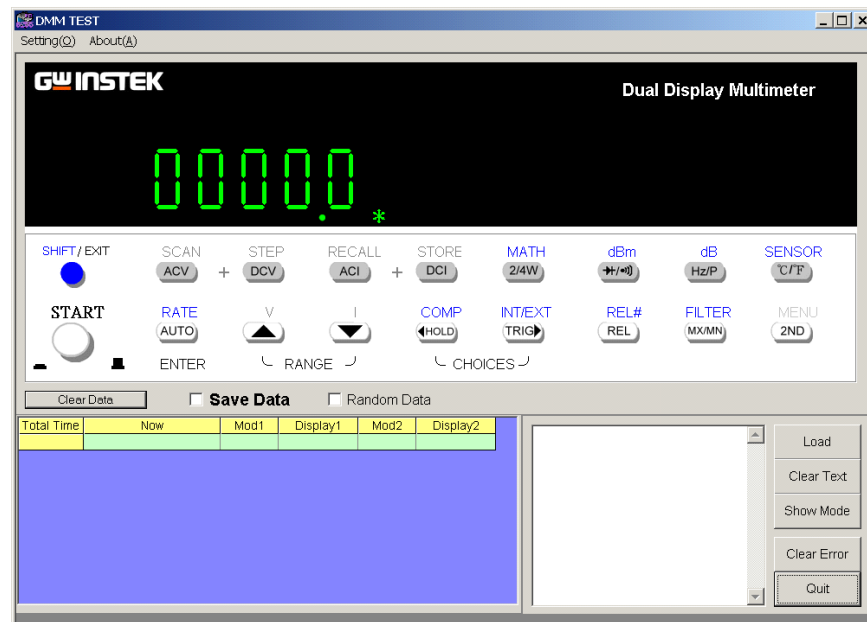
INTRODUCTION

The GDM-8200A series Remote Viewer Guide is intended for showing how to use the remote viewer PC software, GDM825XA_Demo, on Windows OS based computers.

This manual consists of the following chapters.

- CD-ROM overview: Activation, menu
- Installation: USB driver, remote viewer
- Uninstallation/repair: USB driver, remote viewer
- Connection: PC, GDM series, USB cable
- Measurement: measurement procedure, configuration setting
- Plot Graph/Save: Storing data, plotting data in a graph
- Firmware update: Update menu in the CD-ROM

Software overview



The software contains the following functions.

- Making measurements in real-time
- Displaying measurement results in real-time
- Storing measurement data

C D-ROM OVERVIEW

The software CD-ROM contains all the items needed to install and run the software, plus more.

Main menu

Inserting the CD-ROM into the PC automatically opens the menu screen. If it does not, double-click on the **Autorun.exe** file in the root directory of the CD-ROM.

Autorun.exe file



Autorun.exe
GwInstek

The main menu screen



Website

<http://www.instek.com>

If you have an active internet connection, this hyperlink will take you to the GWInstek website.

Install DMM-VIEWER software menu

Install DMM-VIEWER software

This menu allows installing the viewer software onto the PC. For details about software installation, see page 7.

Install USB Driver
menu

Install USB Driver

This menu installs the USB driver for the GDM series onto the PC. For details about software installation, see page7.

User Manual
menu

User Manual

This menu loads the User Manual and Quick Start Guide PDFs.

Firmware Update
Software menu

Firmware Update Software

This menu loads the software for the firmware upgrade. For details about upgrading the firmware, see page26.

View CD-ROM
Contents menu

View CD-ROM Contents

This menu opens shows the contents of the CD-ROM in Explorer.

Quit menu

Quit

This menu closes the menu screen.

INSTALLATION

Two items, the USB driver and DMM Viewer Software need to be installed onto the PC in order to run the software properly.

Make sure the USB driver is installed *first* onto the PC.

1. Accessing the CD-ROM Open the CD-ROM menu. For details, see page5.

2. Installing the USB driver ⚠ If using RS232 rather than a USB connection, this section (Installing the USB driver) may be skipped.

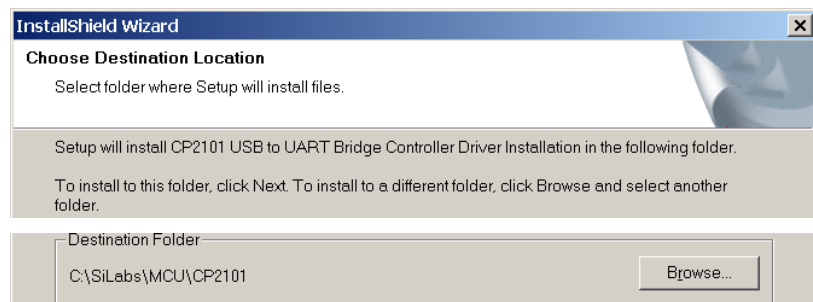
1. Click on the **Install USB Driver** icon.



The InstallShield Wizard will guide the installation process.

2. Click **Next** to move ahead.

When choosing the installation directory, it is strongly recommended that the default directory is left untouched.



The PC may need to be restarted once the driver is installed.

3. Installing the viewer software

1. Click on the **Install DMM-Viewer software** icon.

Install DMM-VIEWER software

The InstallShield Wizard will start up.

2. Follow the directions of the InstallShield Wizard. When choosing an install location it is recommended that the default location is chosen.

The default location of the software is C:\Program Files\GDM825XA_Demo.

A program icon should be available from the Start Menu.



To check the software version please see page 26.

UNINSTALLATION / REPAIR

Follow the procedures described in this chapter when the viewer software or the USB driver needs to be fixed due to malfunctions, or to be removed.

Accessing the CD-ROM Open the CD-ROM menu. For details, see page 5.

Uninstalling or fixing the USB driver To remove the USB driver, it must be uninstalled using **Add/Remove Programs(XP)** or **Programs and Features (Vista)**.

1. Launch **Add/Remove Programs(XP)** or **Programs and Features(Vista)** from the **Start menu**.

Start → Control Panel → Add/Remove Programs (XP)

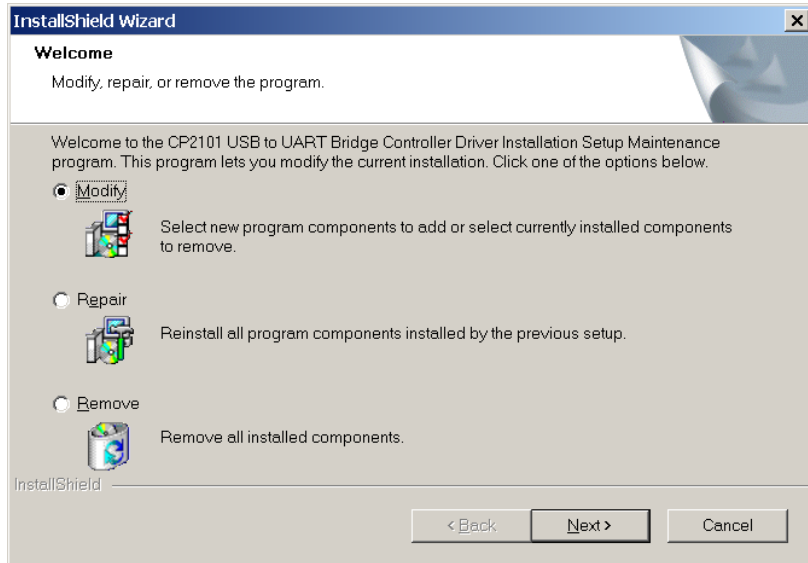
Start → Settings → Control Panel → Programs and Features (Vista)



2. In **Add/Remove Programs** or **Programs and Features** choose **CP2101 USB to UART Bridge Controller Driver**.



3. Follow the instructions to uninstall until the InstallShield Wizard window appears.



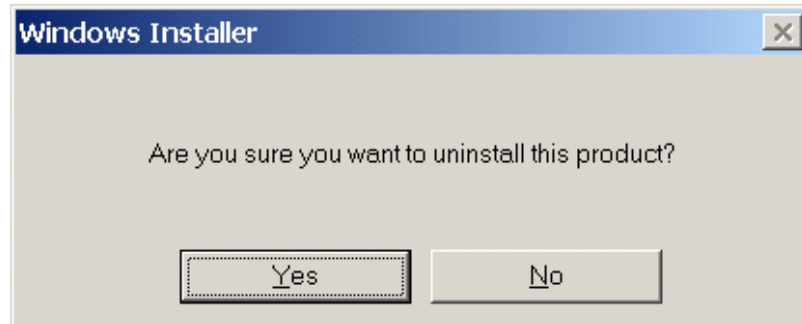
Select **Remove**, then press the **Next** button to proceed until the driver is uninstalled.

Uninstalling the Viewer software

1. Select Uninstall Software from the Windows Start menu select the GDM-825XA_Demo program menu and follow the instructions.



2. Select **Yes** to uninstall the product.



The Uninstaller will automatically finish the uninstallation.

CONNECTION & CONFIGURATION

After installing the software and driver to the PC, the remote control connection needs to be established on the GDM 825XA DMM.

NOTE: If you are using DMM-Viewer in software demonstration mode (no hardware) skip the Connection and Configuration procedure and see page 18.

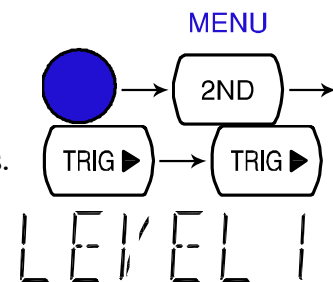
1. Installing the software and driver Follow the procedures on page 7.



The following procedure describes a USB connection configuration and procedure. The GDM8200A also supports RS232. If using RS232, follow the same procedure to disable USB, if it is not already.

2. Configure the GDM series

1. Press the **Shift** key, the **2ND** (Menu) key, then the **Right** key **twice**. The I/O configuration menu appears.



1 / 0

2. Press the **Down** key until the USB selection display appears.



USB

LEVEL 2

3. Press the **Enter** key to confirm USB settings menu.



4. The USB ON or OFF selection appears. Press the Up or Down key to turn on.



Note: If using an RS232 connection, select the **USB OFF** option.

5. Press the **ENTER** key to confirm the USB (either on or off) selection.



6. Press the **EXT** key to get out of the configuration mode.



When the GDM82250A is turned off, the USB configuration will be lost. Please see the User Manual to keep the USB configuration as the default configuration at startup. Firmware 2.10 and later is able to change the startup default settings. For the latest firmware please see the GWInstek website or contact your nearest distributor.

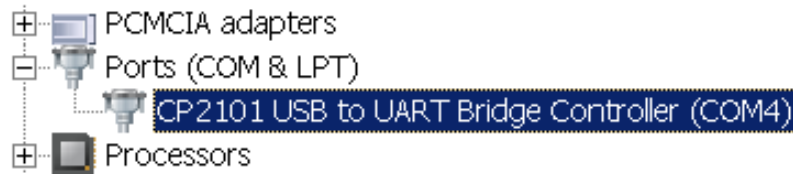
3. Connect the USB cable

1. Connect the USB cable to the rear panel terminal (upper port).

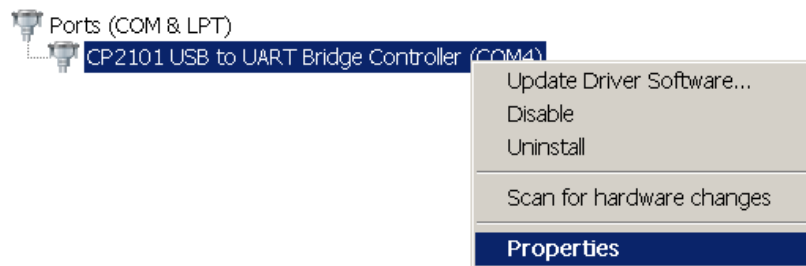


2. Connect the other side of the USB cable to the PC.

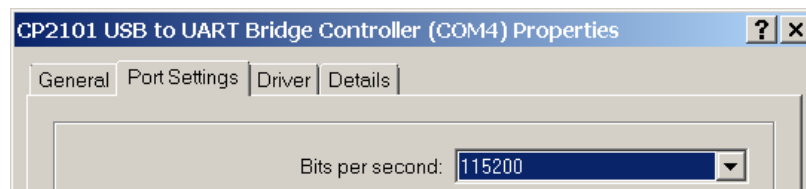
4. Configure the PC
1. To make sure the GDM is recognized by the PC, open the **Device Manager (Start > Control Panel > (System) > Device Manager)**. The USB driver, CP2101, should be listed in the Ports section.
 2. Check which port (COM) the USB driver is assigned (Click on the Ports + icon).



3. To see the baud rate of the connection, right click the CP2101 Port and select Properties.



4. Click the **Port Settings** tab and note the baud rate of the connection.



5. If the PC asks for the location of the driver, point to the driver directory (page7).

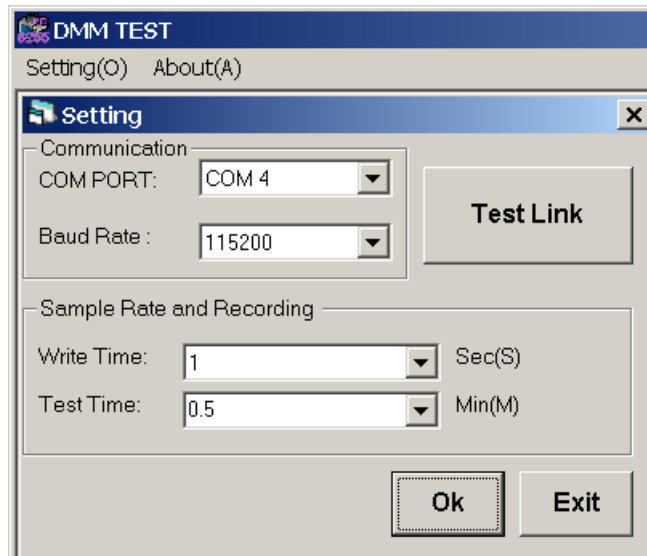
5. Configure DMM Viewer
1. Activate DMM Viewer.



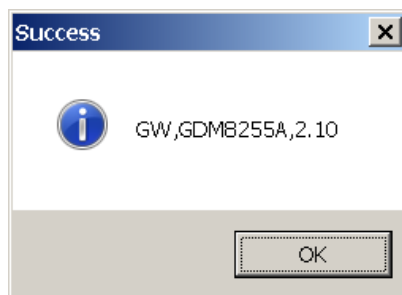
2. Click on the **Setting(O)** menu and open the settings dialog. Enter the default settings as detailed below. For more information on configuring Sample Rate and Recording, see page17.



- COM PORT: according to the Device Manager
 - Baud Rate: 115200 (Or the baud rate in step 4)
 - Write time: 1 S
 - Test Time: Continuous
3. Click on the **Test Link** button. The viewer software and the GDM series will try to establish a connection (success), or an error message appears (fail). If the connection is successful, the pop-up message shows the GDM series model number and firmware version.



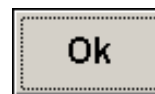
Success



Fail



4. Click on **OK** to save and leave the Settings screen.



5. Move on to the measurement (page16).

M EASUREMENT

1. Establish remote connection

Follow the procedures for connection and configuration on page 11.

2. Select measurement item

The front panel keys of the GDM825XA series and the DMM viewer software is the same.

Press the measurement keys just like in the GDM series front panel.

Any changes in DMM Viewer will be reflected on the DMM.

For details on how to measure, please see the GDM8200A series user manual.

Normal measurements

(Viewer software: dBm) (GDM panel: dBm)



Special measurements

For measurements that need keys to be pressed at the same time on the DMM, need to be pressed in quick succession on DMM Viewer

To select ACV + DCV or ACI + DCI, click on the AC button and then immediately click on the DC button.

(Viewer software: ACV+DCV)



3. Start measurement

After selecting the measurement type, click on the **START** button to start the measurement. The result is updated in real time in the display as well as in the data field.



Display



Data field


Total Time	Now	Mod1	Display1	Mod2	Display2
00:00:02	2008/9/22 17:28:47	ACDCV	136.861mV	DCV	
00:00:04	2008/9/22 17:28:49	ACDCV	186.129mV	DCV	
00:00:06	2008/9/22 17:28:51	ACDCV	62.221mV	DCV	
00:00:08	2008/9/22 17:28:53	ACDCV	68.385mV	DCV	

4. Stop measurement

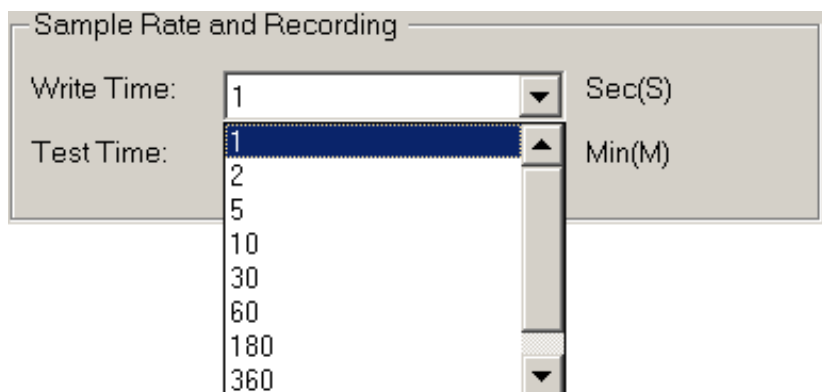
Click on the **START** button again to stop the measurement. The button color changes from red to black.



Configuring the sample rate


1. Click **Setting(O)** from the drop down menu. 

2. In the **Write Time** drop down selection menu choose the sample rate in seconds, from 1 second to 360 seconds.

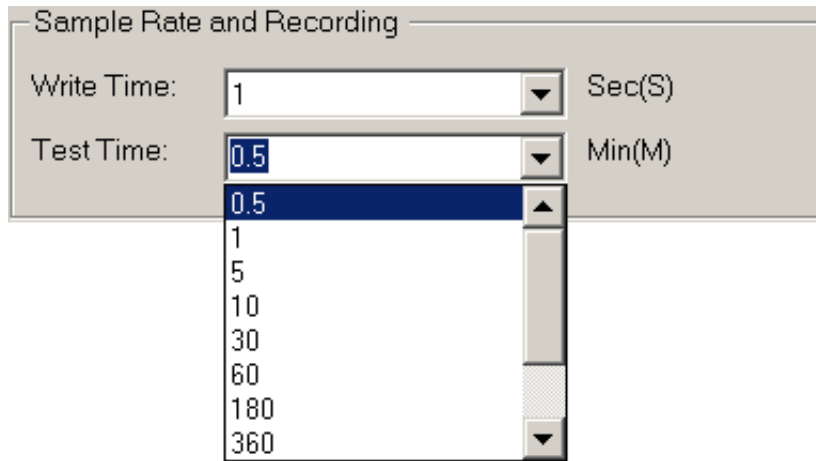


3. Click **OK**. 

Configuring the measurement duration time

1. Click **Setting(O)** from the drop down menu. 
2. Choose the duration of the measurement (in minutes) from the **Test Time** drop down selection menu. You can choose from .5 to 1440 minutes. Measurements will cease after the allotted time has elapsed from when the Start button is pressed.

If **Continuous** is selected then the measurements will continue until the Start button is pressed again.




3. Click **OK**. 

Simulate (test) measurement item

To view (simulate) how each measurement item works without actually operating the DMM, the **Random Data** function will input random data into DMM Viewer to test the software functionality.

The **Random Data** function will be disabled if the GDM-8255A/GDM-8251A is connected. To use the **Random Data** function any instrument must be disconnected from the operating PC or turned off.

1. Check the **Random Data** checkbox 

Now that Random Data has been checked, DMM Viewer will function as if the multimeter is connected. There is no need to configure any connection settings.

2. Proceed to measurement. See the Measurement section (page 16) for details, ignoring the connection settings.



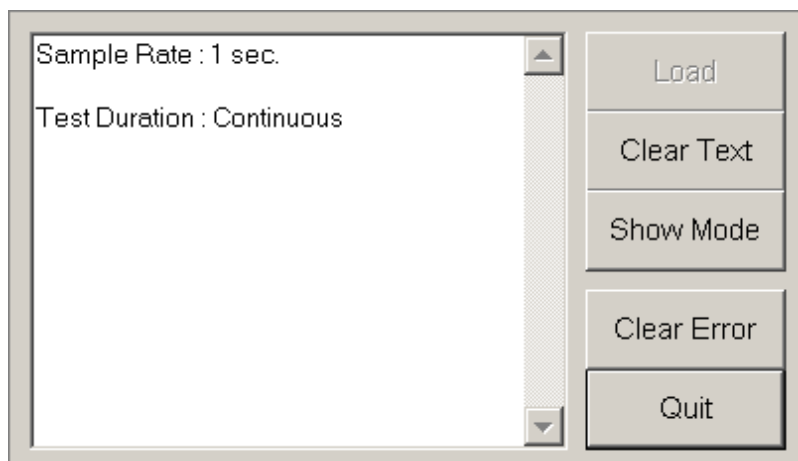
Only the primary display mode will have random data. You cannot test the secondary display for random data.

Random data will fill the display panel and data field at the sample rate selected in the Setting menu.



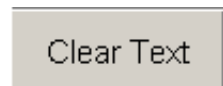
Total Time	Now	Mod1	Display1	Mod2	Display2
00:05:46	2008/9/22 17:07:35	DCV	001.707 mV		
00:05:48	2008/9/22 17:07:37	DCV	001.706 mV		
00:05:50	2008/9/22 17:07:39	DCV	001.706 mV		
00:05:52	2008/9/22 17:07:41	DCV	001.708 mV		
00:05:54	2008/9/22 17:07:43	DCV	001.708 mV		
00:05:56	2008/9/22 17:07:45	DCV	001.705 mV		
00:05:58	2008/9/22 17:07:47	DCV	001.705 mV		
00:06:00	2008/9/22 17:07:49	DCV	001.706 mV		
00:06:02	2008/9/22 17:07:52	DCV	001.706 mV		

Command Plane The Command Plane will display any changes to the sample rate and measurement duration



Clear Text from the Command plane

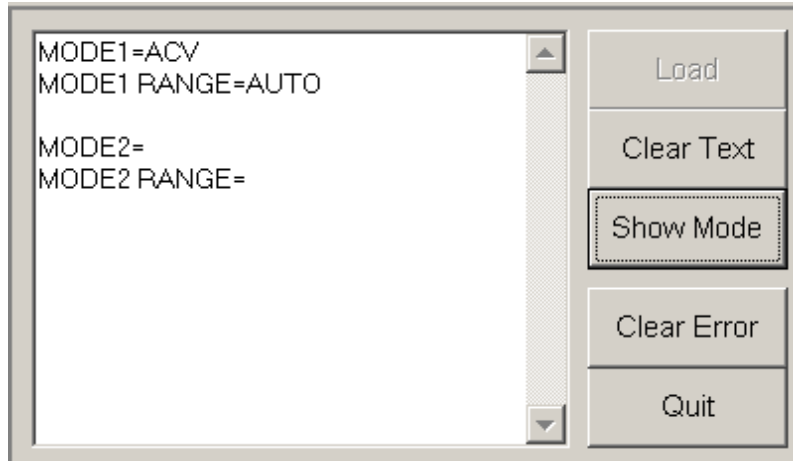
Click **Clear Text** in the Command Plane menu to clear the text box.



View the measurement mode

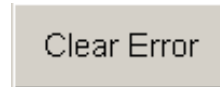
To check the measurement mode of the DMM, click on the **Show Mode** button in the command plane. The mode appears.

- MODE1 is the measurement type for the 1st display.
- MODE1 RANGE is the range of the measurement setting for the 1st display.
- MODE2 refers to the 2nd display.



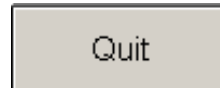
Clearing errors

To clear errors from the Command plane, click **Clear Error**.



Quitting the program

To quit the program simply click **Quit**.



PLOT GRAPH/ SAVE

To be able to plot data, it must first be saved. Once data is retrieved, the measurement data can be viewed in graph mode or used in a spreadsheet. This section shows how to store the data and view it (offline) using the graph function.

Store data

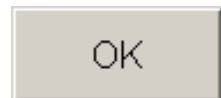
To store data, check the **Save Data** checkbox *before* you start your measurements. Every time you wish to save a file the check box must be rechecked to activate the save function.



You can *only* plot data after it has been saved first! The following instructions must be made every time you wish to save data.

1. Check the **Save Data** checkbox **Save Data**
(recheck the **Save Data** checkbox if you have already previously saved)

2. Type in the file name (no file extensions are needed) and click **OK**



The file will be saved in the directory where the viewer software is installed.

3. After you click the **START** button your measurements will be recorded into DMM VIEWER's program directory.



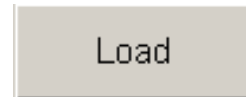
4. Wait for the Test Time to finish or click the **START** button again to finish.



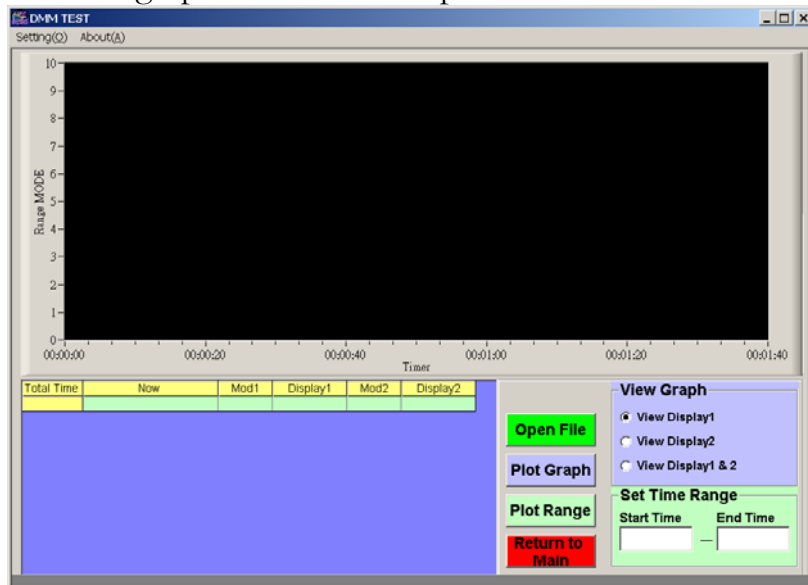
The file will only save after the test time has been completed or the Start button has been pressed again.

Load data

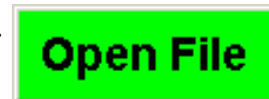
1. Click on the **Load** button at the lower right side of the screen.



2. The graph mode screen opens.



3. Click on the **Open File** button.

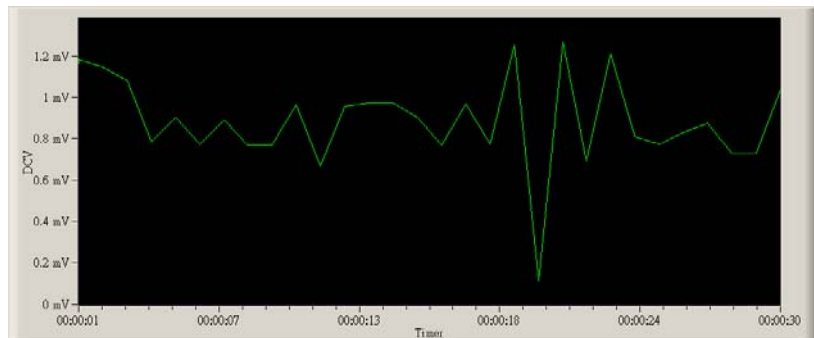


4. A file dialog window opens, pointing to the saved measurement files in the remote viewer software directory. Select the data file and click on the **Open** button.
5. The measurement data will be displayed in the data plane in the lower left part of the screen.

Total Time	Now	Mod1	Display1	Mod2	Display2
00:00:21	2008/10/31 14:06:43	DCV	001.266 mV		
00:00:22	2008/10/31 14:06:44	DCV	000.693 mV		
00:00:23	2008/10/31 14:06:45	DCV	001.209 mV		
00:00:24	2008/10/31 14:06:46	DCV	000.808 mV		
00:00:25	2008/10/31 14:06:47	DCV	000.772 mV		
00:00:26	2008/10/31 14:06:48	DCV	000.830 mV		
00:00:27	2008/10/31 14:06:49	DCV	000.874 mV		
00:00:28	2008/10/31 14:06:50	DCV	000.729 mV		
00:00:29	2008/10/31 14:06:51	DCV	000.728 mV		
00:00:30	2008/10/31 14:06:52	DCV	001.035 mV		

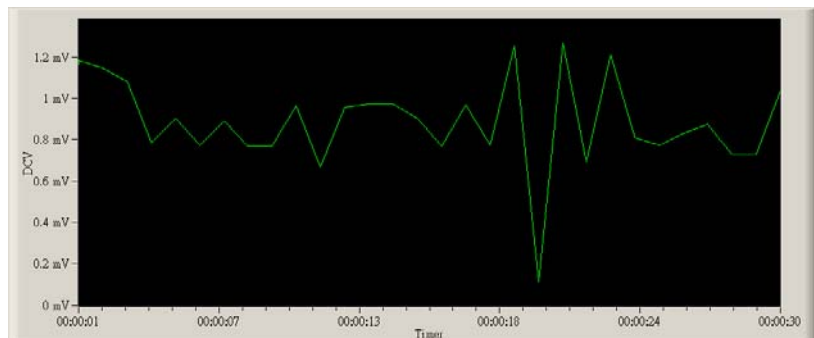
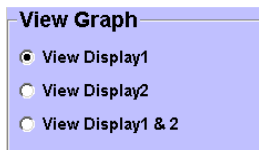
Plotting the data

1. First make sure you have saved a session (page21) and loaded data (page22) to be able to plot data.
2. Press the **Plot Graph** button.
The data will be converted into a graph form and will be displayed in the screen. Currently the graph will plot “Mod1” (display 1).

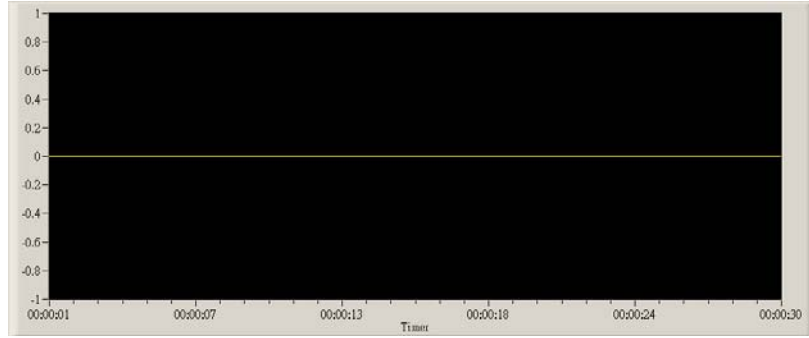


View different displays

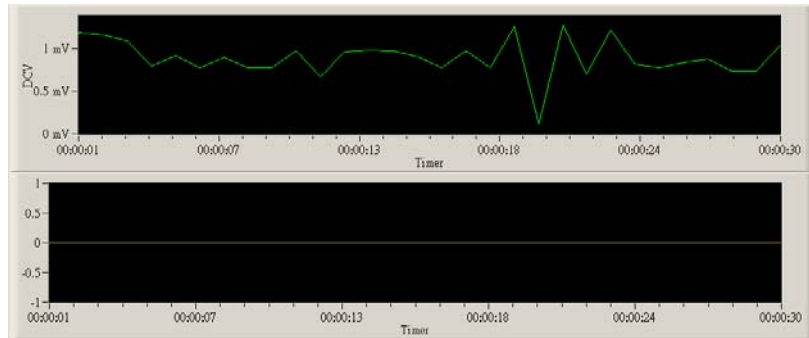
Click on any of the options in the **View Graph** panel to switch between different display modes



View Display2

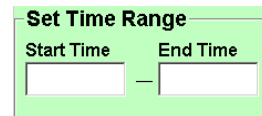


View Display1 & 2



Changing the graph time range

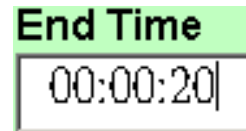
1. The start and end time of the plot can be changed by manipulating the **Set Time Range** panel



2. Click in the **Start Time** text box, delete the time you want to change and type in a new start time.



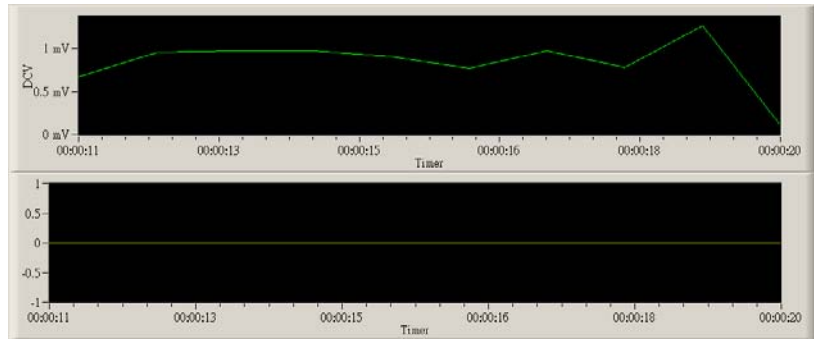
3. Click in the **End Time** text box, delete the time you want to change and type in a new end time.



4. Press the **Plot Range** button to plot the new time range.



The graph will now display a new plotted time range.



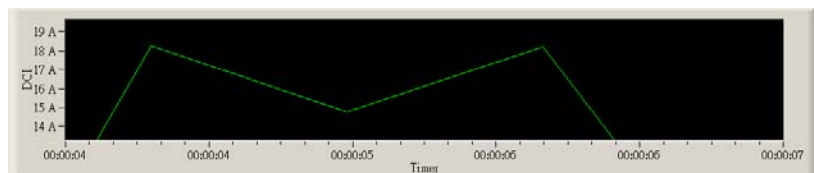
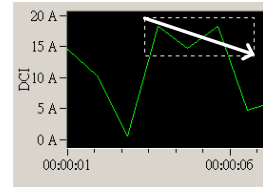
Reset Plotted Range

Click the **Plot Graph** Icon to display the default ranges.



Zoom In

1. To zoom into any part of any graph just select an area with the mouse
2. **Left click and hold** the top left most corner of the area you want to select
3. **Drag down** to the bottom right most corner and **release** the left mouse button



Zooming can be performed multiple times within a zoomed window.



Note: This will only zoom the display and not change the current range settings.

Cancel Zoom

Press the **Plot Graph** or **Plot Range** buttons to zoom back out to the default ranges



Return to the main Display Window

Click **Return to Main** to go back to the main Display Panel



FIRMWARE/ VERSION

This section describes how to access the Firmware and the Update Procedure included in the CD-ROM. Contact your local distributor for the latest firmware.

Firmware Update Procedure

1. Open the CD-ROM menu. For details, see page 5.
3. Click on the **Firmware Update Software** button.



4. The Procedure and file button appear.



5. To view the procedure document, click on the **Firmware Update Procedure** button. A PDF file automatically opens.



6. To run the software, click on the **Run Wsd_v6_7.exe** button. Refer to the Update Firmware Procedure PDF on the CD-ROM for instructions.

Modify the firmware	When the firmware needs to be fixed after installation, run Wsd_v6_7.exe again. The Uninstall and Repair dialog window appears. Refer to the Update Firmware Procedure PDF on the CD-ROM for instructions.
---------------------	---

Version	You may need to check the version of the software to see if you have the latest version.
---------	--

On the main display window click the **About(A)** menu tab to show the version number

